



Volume XXVIII Issue 6 September 2010

# Idaho Chapter of Heritage Artists **CHAPTER CHATTER**

## Message from the President



I cannot believe summer is almost over, school is back in session, HOOT is over, and I didn't organize my craftroom or lose the 25 pounds I planned. The Western Idaho Fair was well attended although I don't believe we had as many participants as last year. Our own Diann Williams worked long hours to add some structure to the Decorative Painting category. This year the judges were required to document their ratings and using a point system determine the First, Second and Third place awards. It's not perfect yet, but there was a large step in

that direction. Donna Kirk worked on the demonstrators schedule, sharing time with the Gourd Society. I had a slot on the first day and enjoyed the time talking to visitors and sneaking in some painting time. It is not too early to start thinking about the categories and what you want to paint for 2011... it will be here before you know it.

Bring your Fair entries to the Chapter meeting in September and share your wonderful work with the Chapter members.

The "paint brush pins" we painted for the Chapter's Gathering in Wichita were a huge success! We all love to get something to paint, but to get something painted is a treasure! There were only 781 registered attendees. I was reminded of the year in Nashville when there were more than 3300 and you couldn't get a class. With only 781 attendees you could almost get all of your first choice classes. Even if the Convention attendance was small, you felt more like a valued participant, and not invisible. I think this is more like a large fish, little pond, than a little fish in a big pond.

We have several events between now and the end of the year.

September Chapter meeting - we will auction off the first of our Seasonal Chairs. You will want to purchase tickets, they are all going to be wonderful.

The nomination committee, headed by Diann Williams, is looking for nominees willing to donate their skills to help the chapter. As of now, she still needs nominees. If you have been thinking about an office or chairman of a committee, now is a great time to step up.

October is a busy month, we start the month with "Light the Night" where we paint faces. Never painted a face? That is okay, we can learn together. Call me for more information (Leah). Retreat - It is a mystery dahling - painting on a suitcase, surprise painting project, fun game, prizes, wonderful food, great friends, pool party, etc. Sounds like fun, but when do we sleep?

October meeting - the committee is planning a fun day for us and our guests. There will be demo's of things you have always wanted to try or learn more about. And, the second Seasonal Chair will be auctioned.

November is the election and we will be selecting new leaders and slowly closing out the year getting ready for new board members, bringing our paperwork up to date (heaven forbid letting your successor find out your weakness) yes, I am talking about me. The third Seasonal Chair will be auctioned.

December is the Christmas Party and our fourth and final Seasonal Chair will be auctioned. It would be such an honor to own any of the four chairs.

Okay I am through rattling - see you at the September Chapter meeting.

Leah - 455-4266

### Dates to Remember

September 14	Board Meeting	6:30PM at Sally's
September 18	Chapter Meeting	Paint with Sandy
September 25-28	Toleliners Convention*	Double Tree Hotel at the Seattle airport
October 1, 2 & 3	Chapter Retreat	Ashley Inn, Cascade
October 16	Annual Membership Meeting	TBA

\*non chapter event

## Program Happenings

Sandy Halasz 398-8701 appleblzum@aol.com



September

Remember you need the brick shaped block not the square one. They are available at Hobby Lobby and have nice big holes to put your lights in. [Frosted Glass Info](#): You should be able to get the Krylon Frosted Glass at K-Mart and Hobby Lobby (according to the web site they carry the product). Rusteoleum also has a frosted glass spray. By using the frosted glass products, you are able paint directly onto the glass using acrylic paint.

### September – Sandy

Holiday Glass Block  
Holly Hanley –Believe Glass Block  
[www.hollyhanley.com](http://www.hollyhanley.com)

### October Membership Drive

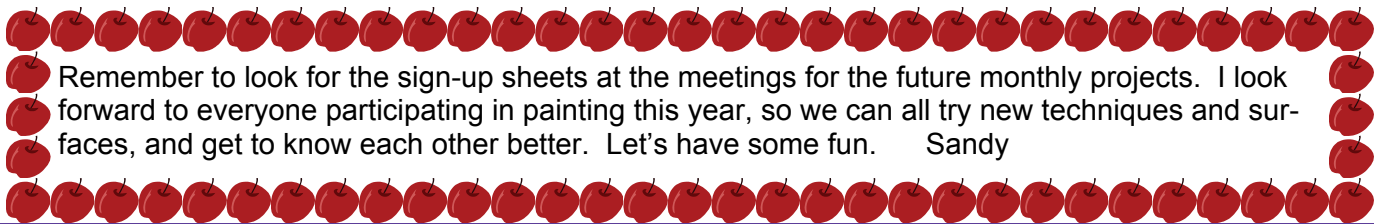
### November—Vicki

Christmas Candle Pillar



November

Vicki will be taking class signups and orders for the wood surface.



Remember to look for the sign-up sheets at the meetings for the future monthly projects. I look forward to everyone participating in painting this year, so we can all try new techniques and surfaces, and get to know each other better. Let's have some fun. Sandy

## Future Seminar Teacher Selection

The two teachers with the highest votes were: Maureen McNaughton and Shara Reiner.

The next group with 17-19 were: Yvonne Kresal, Arlene Linton, Lynne Andrews, Trudy Beard, Bobby Takishima, Brenda Stewart, Karen Ortman.

There will be a discussion regarding booking future teachers at the next meeting.



## Mark Your Calendars

**April 15, 16 & 17, 2011** Shara Reiner is scheduled to come and paint with us. We will be voting on the projects in the near future.

## WAYS AND MEANS HAPPENINGS

The first of the 4 seasonal chairs will be raffled off at the September meeting. Hopefully we will get to see the rest of the chairs. Tickets are still available, you don't want to miss your chance. See Nancy Frank or Stephanie Abernathy to purchase.



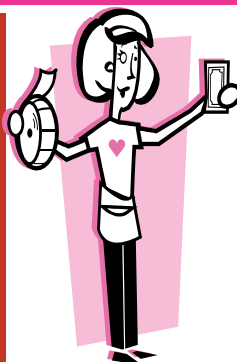
### Sunshine



If you, or anyone you know, is in need of a little sunshine or good wishes, please let Kris or Darlene know. It only takes a minute to make a bright spot in a friend's day.

**Kris:** [krissydee@gmail.com](mailto:krissydee@gmail.com) 853-0203

**Darlene:** [darlene.blakeslee@era.com](mailto:darlene.blakeslee@era.com) 867-2729



Leah Luper won May's raffle and chose the special piece, and will be bringing a painted item for the September meeting. Tickets are \$1 each or 6 for \$5. The more donated items we have the more we make for the chapter.

### Memory Boxes

Summer is over and we are in desperate need of completed memory boxes. It was a fairly quiet summer, however, we have depleted our supply of boxes and only have a few remaining in our stash. So, now that we have boxes available to paint, PLEASE set some time aside to paint up one or two for the hospitals. Let us know if you need some. We will have a supply at the meeting in September or call and leave a message and we will make arrangements to get a box (or two) to you. Thank you for all of your hard work and beautiful creations. Kris Winston and Kathy Griswold 989-9061. Kathy Griswold [kathgris@sarmc.org](mailto:kathgris@sarmc.org), Kris Winston [curtkris@aol.com](mailto:curtkris@aol.com)



Thanks to everyone who took the time to enter their artwork at the fair. We had some beautiful pieces (which is no surprise). Our entries were down a bit from last year with a total of 65 (35 professional & 30 amateur) entries in the decorative painting divisions for 2010. In 2009 we had a total of 92 (25 professional & 67 amateur) entries. These numbers include entries made by non-ICHA members, but that makes up a very small portion which is probably offset by painting entries made in other divisions. The efforts taken to show your work at the fair is a great method for group exposure.

Congratulations to Jackie Chappel for receiving the "Best of Decorative Painting" plaque for her eye-catching Zhostovo tray. Diann

### HERITAGE ARTISTS ART FAIR SHARE

It's time to "Strut Your Stuff" at the Annual Art Fair

No Entry Fee! No Judging Competition!

Just lots of well deserved "OOH s" & "AAH s"

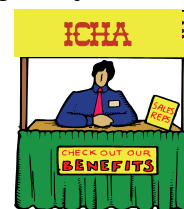
Entries accepted from 8:15 to 8:45 in the Exhibit Area

Come early to complete an entry form & set up your exhibit

Rules: Entry must be your own work, completed in past year.

Entries may be hand painted, crafted, stitched, any creative work of ART

To all who demoed at the fair. You did a great job. Donna



## Membership RENEWAL TIME!!!! YOUR CLUB WANTS YOU!!



Hello All!! Another year of painting fun begins! My how the summer has flown!! I can't believe it is September already.

I'm hoping that all of you are going to Renew your membership in ICHA. There are many fun things already planned for next year and we wouldn't want anyone to miss out!

I will be there to greet each and every one at the door, so please stop and check in. I will also be performing another one of my duties which is collecting membership dues. Yippee!! So please remember to bring ia check or cash, I will mark you paid in full!

### Membership Dues: Annual dues with Society of Decorative Painters \$40.

Please apply for 2011 membership on-line at [www.decorativepainters.org](http://www.decorativepainters.org). Send payment directly to SDP.

**Remember that "Idaho Chapter of Heritage Artists" (ICHA) is an affiliated Chapter of the "Society of Decorative Painters"(SDP). Membership with ICHA is open only to persons who are in good standing with SDP.**

### Annual dues with Idaho Chapter of Heritage Artists (ICHA) \$15.

Make checks payable to ICHA and mail to :

Karla Oliver, 3rd V.P. Membership  
493 Franklin Ave.  
Kuna, ID 83634

Please, please don't forget to renew with SDP!! Bring in a copy of your 2011 SDP card.

If not able to attend the meetings, please email or call me when you receive your new card in the mail.

**All dues must be paid to ICHA and SDP by February 2011 to continue receiving the ICHA chapter newsletters and to participate at Chapter functions we have throughout the year.**

SDP membership is verified with a roster received in January. If you are not on the roster, a reminder will be sent in January. Ok, I will stop now.

Any questions contact me at 922-5781 or [markarla3@msn.com](mailto:markarla3@msn.com).

Karla



#### Note from Gisele

The newest Quick'n'Easy will feature a "charmed ornament" wood piece embellished with charms. If you would like to paint it and need the wood and charms, you can get them from me.

Also, a big congratulations to Vicki Gardiner for her first article in a magazine..so proud of you Vicki!

Gisele Pope 9931 Skycliffe Boise, ID 83704 (208) 378-0569

(By the way happy birthday Gisele (The editor))

# Kuddos!!!!



*It's a Mystery  
Dahling!*

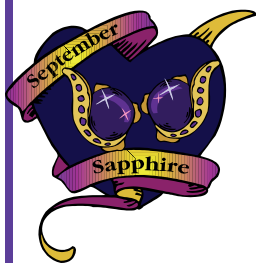
*Mystery Projects, Mystery Surface  
Fun, games, prizes, pals,  
and plenty of painting,*

*It's almost time...  
Retreat 2010  
October 1, 2 & 3  
Ashley Inn— Cascade Idaho*

*Find your suitcase  
Paint your magnifying glass  
Pack your bags*

*Trust us, Dahlings, It's going to be fabulous!*

### September Birthdays



Jan Cline Sept 2  
Sally Jepson Sept 2  
Gisele Pope Sept 7  
Linda Dunlap Sept 9  
Karla Oliver Sept 20  
Diane Fridrich Sept 23  
Phyliss Preschini Sept 26  
Darlene Blakeslee Sept 29

Here are the ladies who signed up for the September hospitality.

Sally Weiskircher  
Judy Cooper  
Stephanie Abernathy  
Nancy Frank



### Nominating Committee

Calling all ICHA members. The time has come to think about officers for next year. We definitely need candidates for president, treasurer, and 1st vice president (programs) as the current officers will not be running in 2011. If you have an interest in these or any office please let us know. It would be great to have a full ballot with at least 2 interested candidates for each office. We will be calling for nominations/volunteers at the September meeting, but feel free to e-mail me if you want to get on the ballot early. We have a great organization, but it can't run without everyone's energy.



Thanks — The Nominating Committee  
diann williams diannw@cableone.net  
Donna Kirk Karla Oliver



## Zhostovo, Russian Folk Art, Classes & Seminars

Zhostovo 101

### “Daisies & Morning Glories”

Call or e-mail to reserve by Sept. 7th\*

(Patterns have to be ordered)

Class for “New to Zhostovo” Artists,  
all skill levels are welcome

Evenings: Mondays 6 p.m. to 9 p.m.

Oct. 4th, 18th, & 25th

Days: Tuesdays 10 a.m. to 1 p.m.

Oct. 5th, 19th & 26th

Cost: \$60 for three 3 hr classes

Pattern & Surface included in cost

Deposit \$30 by Sept. 20th

Balance by first class



### “Peacock & Flowers”

Thursday thru Sunday

Prep Day – Saturday Oct. 23rd

8:30 a.m. to 2:00 p.m.

Seminar – Nov. 11–14, 2010

9 a.m. to 4 p.m.

Cost: \$100 – includes Pattern

Deposit \$50 by Sept. 20th

Balance when you pick up pattern mid-Oct.

Surfaces: Tray \$45\* or Table \$95\*

Due in full Sept 25th

You may provide your own surface

(approx. size is 30” x 60”)

These are the projects, more final detail to be added to be complete—see the finished projects at chapter Sept. 18th!!

Zhostovo 101 “Daisies & Morning Glories” & the “Peacock & Flowers” Designs  
are by Misha Lebedev, Merited Artist of Russia, © Tricia’s Legacy Designs  
The Classes & Seminar will be taught by Laneal Chirin, Certified Zhostovo Associate Artist

Send Deposits to: Laneal Chirin, 1023 W. Elmore Ave., Nampa, ID 83651-2406

COMING MARCH 11 – 14, 2011

ZHOSTOVO SEMINAR presented by MISHA LEBEDEV

Merited Artist of Russia

**More Information in October newsletter!**

**2011 Projects will be on display at September 18th Chapter Meeting**



**Committee Reports:**

**Memory Box** - Many boxes were brought in today. More boxes are on backorder but there are a few here to take to paint today. There are a lot of cute children's coloring pages on the internet that are good for memory box designs.

**Sunshine and Raffle:** Kris gave the list of birthday's for May – Betty Jo Evans and Tana Brown. The birthdays being celebrated during the summer months are listed on page 5 of the May newsletter. She also conducted the raffle drawings throughout the meeting. Ginny Stephens brought the hand painted item this month and it was won by her sister, Leah Luper, who will bring the raffle item in September.

**Ways and Means** – Nancy Franks, announced that the summer chair was on display today and tickets were for sale for \$1 each or 6 for \$5.

The Bunco committee reported that the Bunco Party was a great success. 70 tickets were sold and a profit of \$1335 was made. Many attendees asked to sign up for next year already. It was suggested that with the success of the first two years and the increase in attendance, we should look for a new location next year. Penni Howard will check into her school and also the Red Rock Church as possibilities for next year. Last year \$350 was donated to the Ronald McDonald House from the Bunco Party. Gisele made a motion we donate \$500 to the Valley Crisis Center in Nampa, the charity chosen this year. Tana seconded the motion. Motion carried. Judy Cooper reported that the Crisis Center would like the donation in the form of a gift card from Winco so they may purchase needed supplies. Bev thanked everyone on the Bunco committee. She is putting together a box with all the things to save for next year.

**Art Share** – Kris Hennis shared the pair of pants she painted in Betty Jo's class last month.

**Hospitality** – Due to a miscommunication, no one brought refreshments today, so Ginny Stephens went and purchased some for this meeting. Several people made donations to make this possible.

**Fair:** The Western Idaho Fair will be August 20<sup>th</sup> to 29<sup>th</sup> and the theme is Barnyard Ball. Donna will be taking sign-ups for 4 hour shifts to demo and tell people all about our Chapter. There will be an additional demo in another area and it was decided that we do 1 one-hour demo on home décor and that Nony and Gisele be asked to do this. The Canyon County Fair is July 29<sup>th</sup> to Aug. 1<sup>st</sup>. The theme is Wheelin' and Squeelin". Everyone is encouraged to enter both fairs and promote our art.

**Retreat** – Nony and Gisele did a skit about Retreat, showing just how much fun it is going to be and also gave small hints about things to come. Vicki Kausen came out with a magnifying glass looking for clues about retreat. Packets will be coming to everyone with information needed before retreat and a magnifying glass that is to be painted. You will get to keep one, but it will probably be one painted by another member. Everyone going to retreat will be bringing a suitcase to paint on (the design is a mystery until you get to retreat) and the only other things required are the usual painting supplies that you take to classes. Other surfaces will be prepped and supplied to you at retreat. Sally reported that all balances are due by July 15<sup>th</sup>, and may be sent to her home. You may email for the address if you don't have it.

**October Membership meeting:** The first committee meeting was held May 13<sup>th</sup>, and it was a very productive meeting. The theme this year is Home Décor. It will be held in a model home and is set for the Locust Grove and Amity area subject to change if the home sells before then. There will be demos on painting for the home and volunteers are needed for this. Donations of hand painted items for the home are needed such as tables, stools, chairs, etc. The seasonal chairs will be shown and sold at the October meeting. Please let Julie or Vicky know if you can demo or donate something for this meeting. Those members bringing a guest will receive a free raffle ticket as well as the guest.

**Nominating Committee:** Diann Williams reported that by the September meeting, they will need names for those running for office for 2011. If you are willing to step up sooner and let her know you are willing to be added to the ballot for any position, just give her a call or email. The goal is to have at least two names for each position.

**Christmas Party:** The committee has had one meeting and plans are underway. The next meeting is June 10<sup>th</sup> at 6:30 at the Moxie Java on Overland.

**Old Business:** Leah reminded the members that she had passed out paint brush pins to be painted for the chapters meeting at SDP in June and there were still about 15 outstanding. She asked they be returned either painted or unpainted, as soon as possible. She also thanked everyone who had painted them. We are donating 100 of the pins.

**New Business:** There was a discussion on how to support new members at the meetings. It was suggested that a couple of times a year we could have a second class on the other side of the room for beginners or anyone who needs help in certain areas. Gisele will be having a tips and techniques class in January. We also need to compile a list of online resources for classes, tips, etc. If anyone knows of a good site online for this, let Sally know and she will add it to the list she is working on. It was also reported that Jo Sonja has a good demo video on YouTube.

Gisele reminded everyone she is doing the Relay for Life to raise money for the American Cancer Society on July 9<sup>th</sup>. They are looking for donations, buying and painting bags for the Luminaries Ceremony and participation at the event. It is an all night affair in a carnival atmosphere for a great cause!

Meeting adjourned at 10:20 a.m. Painting with Sandy followed the meeting

---

Sally Weiskircher, Secretary

---

Leah Luper, President

### **Newsletter Deadline**

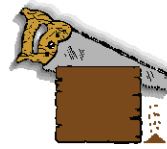
**Monday, Sept. 27. Please send your information to: [ichanews@gmail.com](mailto:ichanews@gmail.com)**

### **Trading Post**

Does anyone have any art related supplies they would like to buy, sell or trade, or even give away? Looking for a particular pattern, book or magazine? The trading post has been very quiet for some time now. Submit your ad request by the newsletter deadline each month and you can have a free ad as space allows, first come first served. Remember all transactions take place between the interested parties with no chapter involvement.



## Palette & Sawdust



Do you know someone interested in a beginning painting class?

Would you like to attend a Ghouls Night Out Halloween Party?

Information will be available at the September Chapter meeting or watch for a new Web page for classes.

If you need wood, give me a call or Visit [www.paletteandsawdust.com](http://www.paletteandsawdust.com)

Bev and Chuck Canty  
208-459-2380  
401 Smokey Ln.  
Caldwell, Id 83607

## ROD'S HOME IMPROVEMENT

Home Remodel Experts  
Rod 208-936-5778  
Wayne 208-919-1799  
[www.rodshomeimprovement.com](http://www.rodshomeimprovement.com)

Specializing in  
Kitchens and  
Bathrooms

Repairs & Upgrades  
Tile & Laminate  
Painting & Texture  
Mouldings & Trim  
Doors & Windows  
Handyman Services

Licensed & Insured  
License # RCT-20855  
Fax 208-459-2229



THE ORIGINAL COOKIE BOUQUET COMPANY

GLENWOOD CENTER  
5159 N. GLENWOOD  
BOISE, ID 83714  
tel: 208.375.7999  
fax: 208.378.9878

[cookiesbydesign.com](http://cookiesbydesign.com)  
[idahocookies.com](http://idahocookies.com)



(A148-PW)



REBECCA COMPTON, CRS, GRI  
Associate Broker, REALTOR®  
(208) 850-3840 CELLULAR  
(208) 939-3465 HOME OFFICE  
(208) 939-0276 HOME FAX  
[rcompton@coldwellbankertg.com](mailto:rcompton@coldwellbankertg.com)



TOMLINSON GROUP  
6933 W. Emerald Street  
Boise, ID 83704

Professional Client Center  
© Chancarts.com

### ERA West Wind Real Estate

950 N. Cole Road, Boise, ID 83704

Million Dollar Club

Office: (208) 377-2121 ext. 237

Cell: (208) 867-2729

Fax: (208) 377-2309

E-mail: [darlene.blakeslee@era.com](mailto:darlene.blakeslee@era.com)

[www.darstours.com](http://www.darstours.com)



Always  
There  
For You



**Darlene Blakeslee**  
REAL ESTATE CONSULTANT



## It's Your Day

Wedding and Event Planning

Customized services & pricing to meet your needs

Officiant on staff

Krissy Blandford  
Officiant/Planner

921-1809



Diann Williams  
[diannw@cablone.net](mailto:diannw@cablone.net)

921-1880

## Gisele Pope

Creativity....unleashed!  
[www.giselepope.com](http://www.giselepope.com)

Designer  
Business Consultant  
Product Development

9931 West Skycliffe Avenue  
Boise Idaho 83704

208-378-0569  
208-761-3036



## 2010 Officers

<b>President:</b>	Leah Luper	455-4266	luperlea@pacbell.net
<b>1st Vice Presidents (Programs)</b>	Sandy Halasz	398-8701	appleblzum@aol.com
<b>2nd Vice President (Newsletter)</b>	Bev Canty	459-2380	ichanews@gmail.com
<b>3rd Vice President (Membership)</b>	Karla Oliver	922-5781	markarla3@msn.com
<b>Secretary:</b>	Sally Weiskircher	888-3371	sallyw625@gmail.com
<b>Treasurer:</b>	Gisele Pope	378-0569	gisele_pope@hotmail.com

Historian:

**Vicki Gardiner** 453-1511  
vjgardiner@msn.com

Sunshine:

**Kris Hennis** 853-0203  
krissydee@gmail.com

**Darlene Blakeslee** 867-8729  
darlene.blakeslee@era.com

Hospitality:

**Jan Tell** 908-7630 jantell@gmail.com

Memory Boxes:

**Kris Winston** 463-9767 curtkris@aol.com  
**Kathy Griswold** 989-9061 kathgris@sarmc.org

Calling Tree:

**Willa Grant** 344-1406

Website:

**Sally Weiskircher** 888-3371 sallyw625@gmail.com  
**Leah Luper** 455-4266 luperlea@pacbell.net

Art Share:

**Marsha Sellers** 587-1644 grammiesredhat@q.com

Budget Committee:

**Gisele Pope** 378-0569 gisele\_pope@hotmail.com  
**Leah Luper** 455-4266 luperlea@pacbell.net

Fair Committee:

**Diann Williams** 855-0820 diannw@cableone.net

Ways & Means Committee:

**Stephanie Abernathy** 888-5133 szdday@msn.com  
**Nancy Frank** 401-4233 nancylfrank@juno.com

October Meeting

**Julie Cloud** 577-5440 julie.cloud@ymail.com  
Vicky Kausen 461-7750 victoriaelizabeth4u2@yahoo.com

Christmas Party:

**Tana Brown** 968-0557 tbrown015125@yahoo.com  
**Penni Howard** 703-0424 bnphow@cableone.net

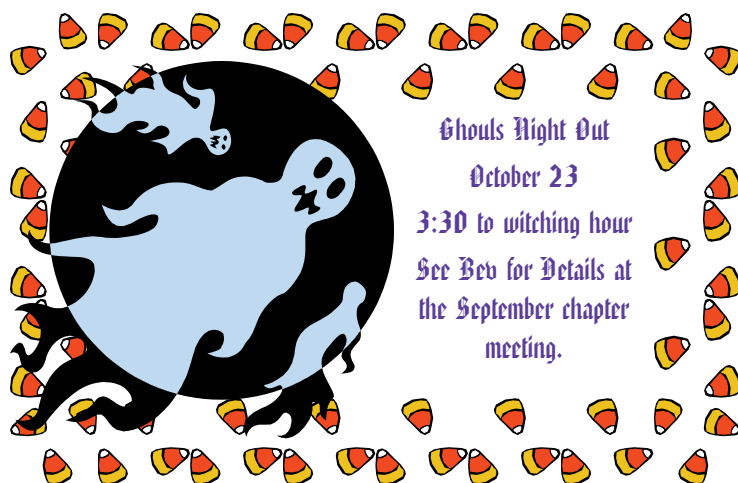
Retreat 2010:

**Nony Housh** 461-4596 nonyhoush@msn.com  
**Betty Jo Evans** 342-1924 bjo@q.com

Nominating Committee:

**Diann Williams** 855-0820 diannw@cableone.net

Audit Committee: Vacant

**~Charitable Donations ~**

Please remember to bring your items to be donated to the Valley Crisis Center in Nampa. Items requested are, women's panties, socks, feminine hygiene products, diapers and formula. Other small personal items such as soap, shampoo, deodorant, etc., are welcome also. There will be a collection box at each meeting throughout the year. A big thank you to Judy Cooper who has delivered our donations to the shelter and reports that the women there are very grateful for our generous contributions. Please let us all keep up the good work!

Idaho Chapter of Heritage Artists  
 Bev Canty, Editor  
 401 Smokey Lane  
 Caldwell, ID 83607

Check it Out!  
 We're on the web!

[www.idahoheritageartists.org](http://www.idahoheritageartists.org)

Would you like to advertise in this newsletter?

#### Advertising Rates

Ad Size	Monthly
Business Card	\$3.00
1/4 page	5.00
1/2 page	10.00
Full Page	20.00

Pay for the full year and get 1 month free!

\*Members receive Business card size free and 10% on all other sizes.



#### Meeting Time and Place

- **Date:** All meetings are on the third Saturday of the month (Except June, July and August no meeting)
- **Time:** 8:00 to 9:00 for Registration, sign-ups, Coffee and Social time.
- **Meeting starts promptly at 9:00am**
- **Place:** *University of Phoenix*  
 1422 S. Tech Lane  
 Meridian, Idaho

Take the Meridian/Kuna exit - turn towards Kuna, take a right on Overland, then right on Tech Ln.