



Volume XXIX Issue 7 September 2011

Idaho Chapter of Heritage Artists **CHAPTER CHATTER**



Happy End of Summer (maybe)!!!!!!

With the fair completed, school starting and Labor Day upon us, we begin a new season. Seems like more time to paint – which, of course, is a good thing!!!!!!!!!!

Speaking of the fair – thanks to each of you who entered your beautiful painted items in the fair. This year we had 44 entries. A very special thanks to Diann Williams and Donna Kirk for their efforts at the fair to organize this event. Diann is the superintendent of the department and Donna organized the demonstrations by our members. The following ICHA members entered their painted projects: Darlene Blakeslee, Jackie Chappell, Julie Cloud, Sandy Halasz, Kris Hennis, Joanne Hulstrand, Donna Kirk, Pat Marler, Donnalee Moore, Jan Tell and Carolyn Wardle. Congratulations to Sandy who won best of decorative painting! Thanks again ladies for your lovely paintings and your efforts to promote our art form. Please bring your pieces to share at the September meeting.

A note of transition for one of our very active members – Sherrill Clark. Sherrill and her husband Rick moved the end of August to Kennewick, Washington. Rick accepted a promotion with his company. This area is where Sherrill's immediate family lives, so it is a win-win situation for everyone, except us. We will miss you Sherrill and wish you God's speed in your new adventures. Sherrill will be here for the September meeting, so you can all wish her well at that time.

SEPTEMBER BIRTHDAYS

Sally Jepson 2nd

Gisele Pope 7th

Linda Dunlap 9th

Karla Oliver 20th

Diane Fridrich 23rd

Phylliss Breschini

26th

Jan Tell 27th



Retreat is almost here. It will be an exciting weekend for all who attend. Don't forget to decorate your slippers either the best way or the ugliest way you can!!!!!! This is such a great time for sharing, caring and learning. I am really looking forward to painting the four seasons, plus all the other fun we will have.

Our fund-raising items should be ready for the September meeting. They are beautiful and something a bit different to display in your home. Be ready to purchase your tickets and enjoy these wonderful painted pieces.

I still need someone to step forward and chair a small event for the October meeting. If you are interested, please call me 407-5219. Sandy Oldham will do a technique class on creating cards with paint, but it would be nice to have a little more since it is National Decorative Painting month and our annual membership meeting.

Pat

Newsletter Deadline

Tuesday September 28 Please send your information to: ichanews@gmail.com



When you see this light bulb, consider clipping and putting the article in your Chapter technique binder.

It's an "Old Fashion Christmas"



ICHA Christmas Party
December 3, 2011
Red Rock Christian Church

Don't forget to sign up to attend, and to decorate a table.

Thank You
Christmas Committee

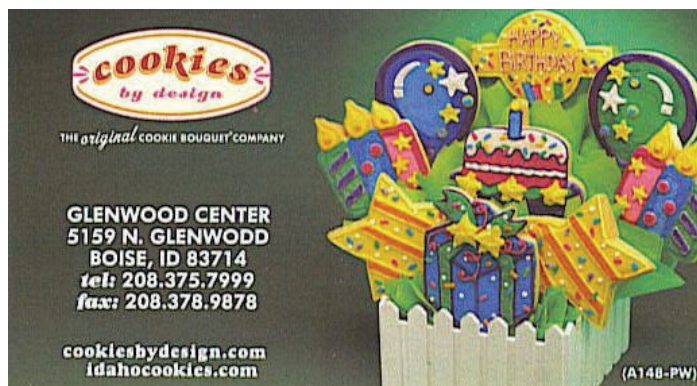
Donna Kirk - Chair



Sunshine

If you, or anyone you know, is in need of a little sunshine or good wishes, please let Darlene know. It only takes a minute to make a bright spot in a friend's day.

Darlene:
darlene.blakeslee@era.com

cookies
by design

THE ORIGINAL COOKIE BOUQUET COMPANY

GLENWOOD CENTER
5159 N. GLENWODD
BOISE, ID 83714
tel: 208.375.7999
fax: 208.378.9878

cookiesbydesign.com
idahocookies.com

(A148-PW)

Program Happenings

Leah Luper 455-4266 luperlea@pacbell.net

Programs and Seminars

The technique class in June was so much fun! We were few, but we had so much fun you missed out! We did a fabric on wood tag and painted a sunflower on the fabric. The fabric was secured with DecoArt's Decou-Page, it dries fast and is easy to work with. We created a necklace with a porcelain 2x2 surface, used a copy of a pansy design I had painted and secured it to the porcelain with Decou-Page. If you have a good printer, you won't be able to tell the difference between the original and copy. This solves the problem when someone sees what you have painted (especially ornaments) and wants one also... just copy yours and secure with Decou-Page. Did I tell you it contains a finish, so you don't have to varnish. So much fun!!



September program - Harvest Banner

Cindy Frenndt will be teaching the Harvest Banner, and she can provide the surface. If you have not signed up and want to, call her at 322-5968.

October Program - Bring a guest - Decorative Painting Month -
Meeting will be held at Red Rock Church - normal time

Sandy Oldham is going to share a cardmaking process. This is a technique class and you will be able to add new material to your technique binder. Bring your normal painting supplies.



November program - St Nick and Company

Leah Luper will be teaching this project - bring surface of your choice, do part of the design or all of it. I will be taking signups before the September and October Meetings or call me at 455-4266.

December - Christmas luncheon

Red Rock church - see Donna Kirk's message in the newsletter

SEMINARS

Maureen McNaughton -- April 13-15 2012-- I need your help - please visit Maureen's site - www.maureenmcnaughton.com and view packets and seminars. Select 5 packets (or seminar projects) that are your favorites. I will have Maureen send us the photos for the most selected packets. Then we can vote for our favorites. I think there are over 100 packets, and we need to narrow it to about 10. I need to hear from at least 20 people to give us a well rounded selection pool. Email a list of your favorites to me luperlea@pacbell.net by OCTOBER 1st.

Arlene Linton is scheduled April 12 - 14, 2013 Save the Date

thank you

Leah Luper



TREASURE TRAYS

The Ways and Means Committee this year selected four silver-plated tea sets to decorative paint and raffle off to raise money for our Chapter. We hope each of you participates by selling and buying tickets to help us meet our very high goal this year. The money earned through the Bunko Party and the Ways and Means project ensures we can paint with Big Brush artists each year and not have to mortgage our homes to do it.

Each tea set was completed by groups of several painters who chose the pattern and style they wanted to paint. Gisele Pope's class chose a Folk Art Floral for their tea set. Betty Jo's two classes each painted a tea set - one a JoSonja floral design and the other a Betty Caithenss pattern. Last but not least, Pat Marler's group painted a tea set using a Zhostovo pattern.

On Saturday, September 17th, all four tea sets will be available for your drooling pleasure. Raffle tickets will be available for you to purchase (\$1 for one or \$5 for six) at that time. We are requesting that each of you support the Chapter by selling at least one packet of tickets. In each packet there will be 12 tickets, which if sold in \$5 increments, is \$10.00 worth. We will also have a color flyer for each of you showing the four tea sets.

You will be given several opportunities in the next few months to purchase additional chances to win the tea sets you would like to have in your home. We are planning to have the tickets available for purchase at our Retreat, the Chapter meetings and various other places during the next few months.

In November, we will have our first drawing for the Betty Caitheness tea set. Our Christmas party will be the second drawing for the Zhostovo tea set. January's 30th Chapter Birthday party will be the third drawing for the JoSonja floral tea set and lastly, the Folk Art Floral tea set will be raffled off at our February Chapter meeting.

We want to take this opportunity to give a warm thank you to all the painters in our Chapter who participated in the creation of these tea sets. We are very happy and grateful they shared their time and talent for our wonderful prizes.

Your Ways & Means Committee



LOCAL TEACHERS

Sandy Oldham

Meridian, 288-1250

Beginner + classes

Wed.: am 9:30 - 12:30; pm 1:00 - 4:00

Call for prices.

Palette & Sawdust

Bev Canty

Nampa/Caldwell 208-459-2380

Beginner + classes

Tuesday evenings and Thursday mornings

Call for times, schedule and fees

www.paletteandsawdust.com

Elsie's Really Cool Stuff

Laneal Chirin,

Zhostovo Associate Artist (Russian Folk Art)

Nampa 208-989-1304 cell

e-mail: Ichirin@msn.com

Beginner/Intermediate Zhostovo & painting classes

Call or e-mail for class info.

Timber and Tole

Gisele Pope 208-378-0569

West Boise Home studio,

Beginner +

Wed. am 9-11:30 or Wed. pm 5:30-8

www.giselepope.com

Tana's Tole Treasures

Southwest Boise, 208-703-5610

Beginner/Intermediate

Call for times/cost

The Tole Shed

Veletta Murphey

2417 W. Kuna Road

Kuna 208-922-5929

Monday evenings

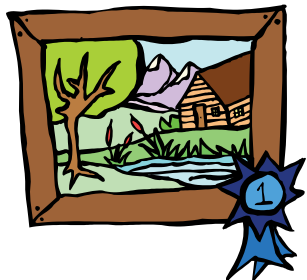
Call for times/price/info.

Leah Luper

Caldwell, 455-4266

Beginner/intermediate

Call for times, schedule and fees



The Fair has ended and I would like to thank all that demo'd there. You did a terrific job representing ICHA. I think we received a few new interested people.

Donna



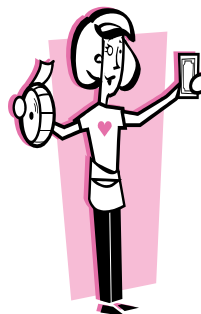
September Hospitality

Sherrill Clark

Sandy Oldham

Steph Abernathy

Bobbie Matthews



Bev Canty won the raffle and chose the special piece. She will be bringing a painted item for the September raffle. Tickets are \$1 each or 6 for \$5. The more donated items we have the more we make for the chapter.

Trading Post

Does anyone have any art related supplies they would like to buy, sell or trade, or even give away? Looking for a particular pattern, book or magazine? The trading post has been very quiet for some time now. Submit your ad request by the newsletter deadline each month and you can have a free ad as space allows, first come first served. Remember all transactions take place between the interested parties with no chapter involvement.

Gisele Pope
Creativity....unleashed!
www.giselepoppe.com

Designer
Business Consultant
Product Development

9931 West Skycliffe Avenue
Boise Idaho 83704

208-378-0569
208-761-3036

It's Your Day
Wedding and Event Planning
Customized services & pricing to meet your needs
Officiant on staff

Krissy Blandford
Officiant/Planner
921-1809

 Diann Williams
diannw@cablone.net
921-1880


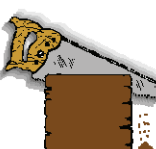
**ROD'S
HOME
IMPROVEMENT**

Home Remodel Experts
Rod 208-936-5778
Wayne 208-919-1799
www.rodshomeimprovement.com

Specializing in
Kitchens and
Bathrooms

Repairs & Upgrades
Tile & Laminate
Painting & Texture
Mouldings & Trim
Doors & Windows
Handyman Services

Licensed & Insured
License # RCT-20855
Fax 208-459-2229

 **Palette
&
Sawdust** 

We are back to work after a very busy summer.

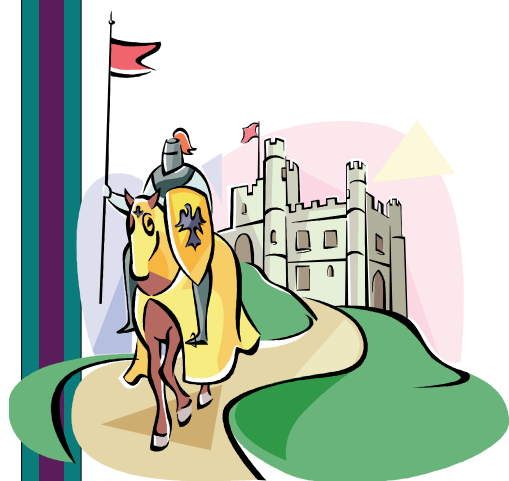
Ghouls night out will be held on October 29th. Cost is \$55 and covers surfaces, teachers, dinner and fun. Attendance is limited to 20 attendees, so be sure to see Bev at Chapter to sign up.

If you need wood, give us a call or
Visit www.paletteandsawdust.com

Bev and Chuck Canty
208-459-2380
401 Smokey Ln.
Caldwell, Id 83607

Girls Knight Out

Sept. 30, Oct. 1 & 2
Ashley Inn, Cascade, ID



Well retreat is about a month away. Just a quick recap: the project can be painted on a piece of your choice, a TV tray or the chair. The approximate measurements for the TV tray is 14 x 19 and for the chair it's approximately 15 x 16 with it narrowing towards the back to approximately 14 3/4. The project packets went out about the 20th of August, so everyone should

have received them by now. If you didn't get one contact Sally ASAP at sallyw625@gmail.com. This should give you plenty of time to get your pieces prepped and ready before retreat. We will have a slipper contest, and the categories will be the ugliest, prettiest and the most creative. The next meeting will be Thursday, September 8th at 6:30p.m. and the address is 2310 W. Sandalwood, Meridian.

Thank you, Your Retreat Committee



IDAHO CHAPTER OF HERITAGE ARTISTS
SOCIETY OF DECORATIVE PAINTERS
BUSINESS MEETING MINUTES
SATURDAY, JUNE 18TH, 2011

The June meeting of the Idaho Chapter of Heritage Artists was held on June 18th, 2011 at the University of Phoenix

Present: Stephanie Abernathy, Tana Brown, Lindsay Bruns, Winston Bruns, Bev Canty, Laneal Chirin, Ann Christoph, Sherrill Clark, Pat Cook, Joyce Dick, Margaret Erskine, Margo Ferrera, Cindy Frendt, Dianne Fridrich, Vicki Gardiner, Sharon Gilbert, Willa Dean Grant, Kathy Griswold, Sandy Halasz, Penni Howard, Melva Johnson, Vicky Kausen, Donna Kirk, Darlene Little, Leah Luper, Pat Marler, Donnalee Moore, Veletta Murphey, Cheryl Myers, Laura O'Dell, Karla Oliver, Gisele Pope, Beth Seamans, Wanda Stuart, Jan Tell, Carolyn Wardle, Sally Weiskircher, Diann Williams, Kris Winston, new member Diana Parker and guest Kay Grooms.

Call to Order: President Pat Marler called the meeting to order at 9:00am.

President Pat Marler thanked Leah Luper for doing the programs and to the University of Phoenix for allowing us to meet at their facility.

Officer Reports:

Treasurer's Report:

Balance: \$15,104.50

Communications: none

Programs:

Membership: Kris Winston announced we have a new member Diana Parker. This brings us to 106 members.

Committee Reports:

Memory Box: Kathy Griswold says we are in need of Memory boxes. Give them a call and they will pick up and deliver.

Ways and Means: Jan Tell reported that Bunco made \$1,786.71 with expenses about \$500. A portion will be going to the Youth Outreach Program for the arts. Winston Bruns asked how much will be going to charity and President Pat said we need to look at the budget and discuss this at the September meeting.

Art Share: Ann Christoph showed us the beautiful work by Giselle Pope, Tana Brown, Leah Luper, Kathy Griswold, Jan Tell and Penni Howard.

Christmas Party: Donna Kirk reported the Christmas Party will be held December 3, 2011. The lunch will be \$8.00 per person. She asked people to sign up to decorate the tables. She is only asking volunteers to do a centerpiece decoration. An ornament exchange will also be done at the luncheon.

Sunshine: Sheree Marrett significant other passed away. Birthdays for June, July and August were read off.

Retreat: Stephanie Abernathy reported the retreat will be September 30, October 1st, and 2nd at the Ashley Inn. There will be a Girl's Night Out on Friday with a Pajama Party. They will have a slipper decorating contest with prizes. August 15th patterns will be sent out for the Saturday painting. Orders for the chair are being taken now. The chair will be a Four Season Chair. At the present time there are 44 people signed up to attend. All members are encouraged to attend and enjoy painting together. The cost is \$125. per room with 4 to a room.

September Painting: Cindy Frendt will teach us a beautiful Fall painting with pumpkins at our September 17th meeting.

Old Business:

Leah Luper announced Maureen Mc Naughton will be coming April 13, 14, and 15th, 2012. The cost to the chapter for Shara Reiner was \$552.58. Arlene Litton is coming in 2013.

Bev Canty reported the Chapter's camera that will be used for demonstrations will cost \$540.00 with \$10.00 shipping. Also, \$55.00 for the case with \$10.00 shipping. Total cost is \$615.00. An Epson X9 projector is \$599 with replacement lamp the total is \$798.00. A 60X60 screen is \$75.00. The total spent is approximately \$1500.

Storage for the chapter's belongings was discussed expressing we needed a centrally located storage area. Julie Cloud volunteered her home.

New Business: President Pat Marler reported the Chapter has been awarded from National the Chapter Achievement Award for the 20th time.

Sheryl Clark showed us long sleeved denim shirts that will have a patch to show our affiliation with the chapter. Patches cost \$2.25. Shirts will be approximately \$16.00. Aprons will also be available.

A motion was made by Jan Tell to order 300 patches at \$2.25. It was seconded by Laneal Chirin. Julie Cloud made a motion we order the shirts at approximately \$16.00 per shirt. Willa Dean Grant seconded. After a discussion Julie Cloud amended her motion purchasing shirts for approximately \$16.00 and the chapter pick up the \$30.00 set up fee. Kris Winston seconded. Motion was carried. The shirts will be at the September meeting to try on for size.

Meeting adjourned at 10:00 am.

I hope everyone had a wonderful summer and ready to get together again.

We definitely have the best membership in the country!!

Let's keep introducing ICHA to everyone we meet.

Kris

Membership!!!

~Charitable Donations ~

Please remember to bring your items to be donated to the Valley Crisis Center in Nampa. Items re-quested are, women's panties, socks, feminine hygiene products, cleaning products, diapers and formula. Other small personal items such as soap, shampoo, deodorant, etc., are welcome also. There will be a collection box at each meeting throughout the year. A big thank you to Judy Cooper who has delivered our donations to the shelter and reports that the women there are very grateful for our generous contributions. Please let us all keep up the good work!



HAPPY BIRTHDAY ICHA



January 2012 marks ICHA's 30th Anniversary. Plans are being made for a wonderful celebration for ICHA's 30th Anniversary to be held at our regular meeting on Saturday, January 21, 2012.

There will be honors bestowed, yummy food devoured, memories exchanged, prizes won, and more. Mark your calendars to attend. If you know of any past members, invite them to join us. We would like to have as many past and present members as possible attend. Regular chapter meeting will be held at Red Rock Church, 9 am., followed by voting for chapter projects, and then a fabulous anniversary celebration. --



Julie Cloud and Leah Luper, Chairpeople

HAPPY BIRTHDAY



REBECCA COMPTON, CRS, GRI
Associate Broker, REALTOR®
(208) 850-3840 CELLULAR
(208) 939-3465 HOME OFFICE
(208) 939-0276 HOME FAX
rcompton@coldwellbankertg.com



TOMLINSON GROUP
6933 W Emerald Street
Boise, ID 83704



Preferred Client Care™
© Coldwell Banker

ERA West Wind Real Estate
950 N. Cole Road, Boise, ID 83704

Million Dollar Club

Office: (208) 377-2121 ext. 237

Cell: (208) 867-2729

Fax: (208) 377-2309

E-mail: darlene.blakeslee@era.com

www.darstours.com



ERA
Always
There
For You



Darlene Blakeslee
REAL ESTATE CONSULTANT

2011 Officers

President:	Pat Marler	322-0085	pmarler@clearwire.net
1st Vice Presidents (Programs)	Leah Luper	455-4266	luperlea@pacbell.net
2nd Vice President (Newsletter)	Bev Canty	459-2380	ichanews@gmail.com
3rd Vice President (Membership)	Kris Hennis	853-0203	krissydee@gmail.com
Secretary:	Vicki Kausen	461-7750	victoriaelizabeth4u2@yahoo.com
Co-Treasurers:	Betty Jo Evans	342-1924	bjo@q.com
	Darlene Little	888-3627	dlitt@q.com

Historian:

Vicki Gardiner 453-1511 vjgardiner@msn.com

Sunshine:

Darlene Blakeslee 867-8729
darlene.blakeslee@era.com

Willa Grant 344-1406

Hospitality:

Dianne Fridrich dianne_fridrich@yahoo.com

Memory Boxes:

Kris Winston 463-9767 curtkris@aol.com
Kathy Griswold 989-9061 kathgris@sarmc.org

Calling Tree:

Willa Grant 344-1406

Website:

Leah Luper 455-4266 luperlea@pacbell.net

Art Share:

Ann Christoph 388-2668 anngo-
far@hotmail.com

Budget Committee:

Fair Committee:

Donna Kirk 342-5352 kirkd@cableone.net

Ways & Means Committee:

Jan Tell 908-7630 jantell@gmail.com

October Meeting

Vacant

Christmas Party:

Donna Kirk 342-5352 kirkd@cableone.net

Retreat 2011:

Stephanie Abernathy 888-5133 szdday@msn.com

Nominating Committee:

Audit Committee:

30th Birthday Party

Julie Cloud 362-0828 Julie.cloud@ymail.com

Leah Luper 455-4266 luperlea@pacbell.net

Volunteers don't get paid, not because they are worthless, but because they are priceless!

Dates to Remember

September 17	ICHA Regular Meeting	
September 22-25	*Raindrop's Convention,	Clackamas, Oregon
Sept 30, Oct 1&2	ICHA Retreat	Ashley Inn, Cascade, Id
October 15	ICHA Regular Meeting	Red Rock Church, Boise
November 19	ICHA Regular Meeting	
December 3	ICHA Christmas Party	Red Rock Church, Boise
*non chapter event		

Idaho Chapter of Heritage Artists
 Bev Canty, Editor
 401 Smokey Lane
 Caldwell, ID 83607



Check it Out!
 We're on the web!
www.idahoheritageartists.org

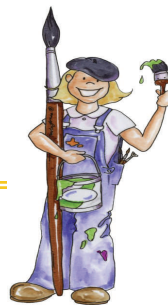
Would you like to advertise in this newsletter?

Advertising Rates

Ad Size	Monthly
Business Card	\$3.00
1/4 page	5.00
1/2 page	10.00
Full Page	20.00

Pay for the full year and get 1 month free!

*Members receive Business card size free and 10% off on all other sizes.



September 2011

Meeting Time and Place

- **Date:** All meetings are on the third Saturday of the month (Except July and August no meeting)
- **Time:** 8:00 to 9:00 for Registration, signups, Coffee and Social time.
- **Meeting starts promptly at 9:00am**
- **Place:** *University of Phoenix*
 1422 S. Tech Lane
 Meridian, Idaho

Take the Meridian/Kuna exit - turn towards Kuna, take a right on Overland, then right on Tech Ln.