



Volume XXVIII Issue 7 October 2010

Idaho Chapter of Heritage Artists CHAPTER CHATTER

Message from your president

This September has been so warm, it feels like summer. Thank you Sandy for sharing the process of painting on glass blocks and the cute design. I was so excited about using the glass blocks to paint lighted houses, I ordered the book with the instructions thinking I would just paint a few of those for gifts. Always good intentions, time to get it done is the issue. Way too many ideas, no time to follow through. It makes me understand the amount of "stuff" I have accumulated.



I was so very proud of everyone that entered projects in the Western Idaho Fair. The numbers were down a little, but still a good showing and some wonderful examples of what we can do. It is never too early to start planning for next year.

We have co-chairmen for the Bunko party next year, Sandy Oldam and Jan Tell THANK YOU!!! You will hear more from them as they plan the event and put their committee together.

Christmas will be here before you know it. The Chapter party will include an ornament exchange, opportunity to paint and/or win a centerpiece, great food (\$8) that you don't have to cook or clean up and a wonderful time with friends.

If you signed up to paint a card for someone in the Service, please bring them to the November meeting so I can get them in the mail

Have you considered running for an office? Signing up for a committee or chairing a committee? Taking a chance and volunteering for a job that puts you just a little outside your comfort zone? If any of these sound like you, let Diann Williams know you want your name on the ballot. Voting will take place at the November meeting.

October: Retreat (10/1-3), Light the Night (10/7), Board Meeting (10/8) at my house 3PM, Open house/Decorative Painting month (10/16)

Thank you for all you do
Leah - 455-4266



Dates to Remember

TBD	Board Meeting	TBD
October 1, 2 & 3	Chapter Retreat	Ashley Inn, Cascade
October 7	Light the Night Walk*	Ann Morrison Park
October 8	Board Meeting	3PM Leah's house
October 16	Annual Membership Meeting	TBA
November 20	Chapter Meeting	Phoenix University
December 4	Chapter Christmas Party	Red Rock Church, Boise



Program Happenings

Sandy Halasz 398-8701 appleblzum@aol.com

October Membership Drive



November—Vicki

We are all looking forward to painting Vicki's decorated Christmas candle pillar. If you have signed up for her class, pick up your surface and prep instructions.



January – Gisele

Gisele has started taking sign-ups for her class in January and will continue at the next couple of meetings

February – Memory Boxes

We will be painting memory boxes. We are in dire need of boxes so please plan on painting in February.

Mark Your Calendars

April 15, 16 & 17, 2011 Shara Reiner is scheduled to come and paint with us. We will be voting on the projects in November.



BUNKO COMMITTEE



Since the Bunko party is held in the early part of the year and we need to acquire a new venue to hold the event, we are asking for volunteers to work with us to find a new location. If you are interested in helping with this fun event, please contact Jan Tell (908-7630) or Sandy Oldham.(288-1250)





TEACHERS FOR 2011

January is the month to vote on classes for the coming year. There are so many creative people in our chapter and I look forward to seeing the projects submitted this year. You have three months to plan and paint an artistic creation that we can all enjoy painting next year. The classes after the meetings are a great way to get to know your fellow painters.

Thank you to all the teachers and everyone who participated in the monthly paint-ins last year. Let's keep this successful program going.

Teacher submission guidelines and suggestions:

- Student fees for classes are \$7.50. When planning your class, the time frame for the class should not exceed 4-5 hours for completion so that we can expect to finish by 3:30 p.m.
- The class fee covers teacher fee, line drawing and prep instructions. If you do not plan to complete the project, photos and step-by-step directions will need to be provided.
- If you charge a supply fee, decide what it will include: i.e. kit of supplies, photos, directions, etc. (You will need to estimate this amount before the January Meeting).
- Plan to have your pieces to the meeting for display no later than 8:30 a.m. If you cannot attend, arrange for another member to bring them for you.

Plan to fill out a sheet about the class listing the following:

1. Source or price of surface (Are you going to provide the surface?)
2. Medium used (watercolor, paint type, other craft supplies needed)
3. Length of class
4. Supply kit fee: List of what is included (picture, directions, surface, etc.)

If your project is selected:

1. You will need to make sure that you get your class dates in the newsletter by providing the newsletter editor with the information about your class, pictures, surface sources, etc.
2. You are responsible for the sign-ups for your class.
3. Plan to be available for sign-ups and collection of class fees 2-3 meetings before your class. (3 will be necessary if you are collecting for and providing surfaces or kits).
4. Plan to be at the class until about 4:00 p.m. on the day of the class.

HOSPITALITY

We need a few additional volunteers to bring some yummy snacks for our October Open House event. We need about 3 or 4 volunteers in addition to the three ladies we already have scheduled to bring something.

Already signed up for October are Leah Luper, Sandy Oldham and myself. As I will be out of town, Ann has agreed to make sure everything gets to the house for Mickie to set up for the day.

Since the Open House will be held in a model home we have been asked to provide finger foods that are not messy. We also will not be supplying coffee or punch for accident purposes. The builder will be supplying water at the event.

Please call either myself (Jan Tell 908-7630) or Mickie Knudsen (890-7732) if you wish to help out.

Report from National Convention in Wichita-2010

There were 781 registered attendees at the Convention. The general meeting was opened with the parade of flags and sets the stage. There is a special feeling of pride to attend the Convention attended by so many countries. The President's report indicated the society is still strong, even with the numbers down, we are finally in the black financially, the first time in Six years! There was \$22,000 donated to the society from Chapters, members, and businesses. The convention in Peoria was close to breaking even and all events were supported with donations, no budget \$ were allocated. An interesting statistic, the average age of SDP members is 61.

A by-law change was proposed that would allow for no conference, and only have a membership meeting. There was a significant amount of discussion prior to the vote. This change was soundly defeated. If you only have a meeting and no conference, how many members would attend?? How would a quorum be determined, would a small number of people decide the fate of the organization? If you utilize the absentee ballot, you do not get to vote for bylaws, only vote for officers. If members are not privy to the discussion, they are not prepared to vote, so it makes sense.

The Chapter's Gathering was a huge success. Thank you to everyone that helped with the paintbrush pins. Everyone at the Chapter's Gathering loved the pins and were thrilled to receive a painted item. We had a discussion about how to increase membership and the table I sat at had a unique process. They partnered with a local Library:

Used a room at the Library to hold weekly classes

Advertise the class at the library and local newspaper

put together a new member kit (like the one decoart provides)

charge a nominal fee for the classes (\$8 to \$10) each week

The surface is purchased by the student (normally inexpensive)

the chapter provides the teacher (rotating teacher - 4 with 1 each week)

The student does not have to join the Chapter or National until the end of the program

Any questions, feel free to contact me -

Leah - 455-4266

Ways and Means Happenings

THANK YOU TO ALL WHO PARTICIPATED IN OUR SUMMER CHAIR RAFFLE/ FUNDRAISER! OUR FIRST CHAIR WAS RAFFLED OFF AT THE SEPTEMBER CHAPTER MEETING (CONGRATS TO SHERRILL CLARK!), BUT IT'S NOT TOO LATE TO PARTICIPATE IN THE NEXT 3 RAFFLES! THE WINNER OF THE FALL CHAIR WILL BE SELECTED AT THE OCTOBER CHAPTER MEETING, AND LAST-MINUTE TICKETS WILL BE SOLD PRIOR TO THE MEETING. TO PURCHASE TICKETS, AS WELL AS TICKETS FOR THE SPRING AND WINTER CHAIR, SEE STEPHANIE ABERNATHY OR NANCY FRANK - - \$1 EACH OR \$5 FOR 6 TICKETS. COME AND SUPPORT OUR CHAPTER!!!!





October Birthdays

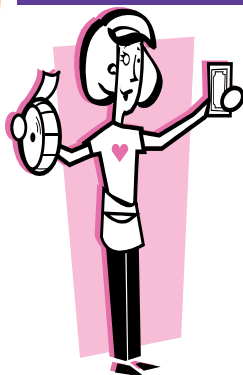
June Skollensberg	Oct 2
Tiffany Stephenson	Oct 2
Mary Anne Pelkey	Oct 4
Barbara Williams	Oct 5
Willa Grant	Oct 17
Vicki Kausen	Oct 22
Margaret Erskine	Oct 24
Kathy Archer	Oct 26



Nominating Committee

Thanks to all who stepped up to run for office in 2011. Nominations are still open so if you were unable to attend the meeting or you have thought it over and think there is an office you would like to run for please let me know.

A ballot will be published in the November newsletter with instructions for absentee voting. Voting is open to all members in good standing. Be sure to bring your SDP card to the meeting.



Sally Weiskircher won September's raffle and chose the special piece. She will be bringing a painted item for the November raffle. Tickets are \$1 each or 6 for \$5. The more donated items we have the more we make for the chapter.

Sunshine



If you, or anyone you know, is in need of a little sunshine or good wishes, please let Kris or Darlene know. It only takes a minute to make a bright spot in a friend's day.

Kris: krisseydee@gmail.com 853-0203

Darlene: darlene.blakeslee@era.com 867-2729

Welcome two new members:

Mary Anne Pelkey, 838 Dooley Ln, Nampa ID 83686, her birthday is Oct 4th. Happy Birthday!

Cynthia Bowman, 305 S Adam Ln, Idaho Falls, ID 83401

There is still plenty of time to pay your ICHA and SDP membership dues for 2011. There are many fun things planned for next year and we wouldn't want you to miss out on any of them!

See you at the October meeting!!!

If you prefer, you can mail your ICHA Chapter dues to me at:

Karla Oliver
493 Franklin Ave
Kuna ID 83634

Please use the form on the next page to renew your National dues with SDP.

Membership!!



Society of Decorative Painters

2011 MEMBERSHIP FORM

1 MEMBER PROFILE *Please print name and address as it should appear on the mailing label.*

Name _____ Membership no. (if renewal) _____
 *Household Member Name (if purchasing a Household Membership) _____ Membership no. (if renewal) _____
 Business Name (if joining as a Business Member) _____
 Mailing Address _____ City _____
 State/Prov _____ ZIP/Postal Code _____ Country _____
 Email _____ Website _____
(Get the most from you SDP membership. Share your email address with us!)
 Phone () _____ Fax () _____

I am a member of at least one SDP chapter. Yes No
 (For information on chapters in your area, please call 316-269-9300 ext. 107 or visit our website at WWW.DECORATIVEPAINTERS.ORG.)
 I would like to give \$2, \$5, \$10, or \$_____ to the SDP Foundation, which provides scholarships to members and supports other SDP initiatives.

2 MEMBERSHIP CATEGORIES [CHECK APPROPRIATE BOX(ES)]

Mark this box if you wish to pay for 2012 membership also.

U.S.

- \$40 Individual (\$45 after 12/1/10)
- \$70 Business (\$75 after 12/1/10)

ANY COUNTRY (U.S. FUNDS)

- \$20 Household*

Household Membership is for an additional member sharing the same address as an Individual or Business member.
If selecting this option, no printed *Decorative Painter* magazine will be mailed to you.

INTERNATIONAL & CANADA (U.S. FUNDS)

- \$70 Individual (\$75 after 12/1/10)
- \$40 Online Individual**
- \$100 Business (\$105 after 12/1/10)
- \$70 Online Business**

The higher international rate reflects postage costs, not an increase in dues.

**** Online memberships: You will receive the magazine online only. If selecting this option, no printed *Decorative Painter* magazine will be mailed to you.**

IMPORTANT

Membership year is Jan. 1. to Dec. 31, 2011. If you join at any month of the year you will receive the back issues and get all the benefits for the rest of the year. Dues postmarked after Dec. 1, 2010, require an additional \$5 late fee. This does not apply to new members or those who didn't renew in the past two years (2009 and 2010).

3 BUSINESS & TEACHER DIRECTORY 2011 RESOURCE CATEGORIES (OPTIONAL)

BUSINESS MEMBERS ONLY

Business Members, check all boxes that apply for the *2011 Business & Teacher Directory*. Listings and *B&T Directory* are **free** with your business membership. Visit SDP's website, www.decorativepainters.org, to submit a fifty-word description of your business and to submit the categories associated with your business. These categories and descriptions will be added only to the *B&T Directory Online Resource*. You must join or renew by Dec. 1, 2010, in order to be listed in the printed version of the 2011 Business & Teacher Directory. Those who join or renew after Dec. 1 will be added to the *B&T Directory Online Resource* only.

- Author
- Distributor/Wholesaler
- Home Studio
- Manufacturer/Importer
- Publisher
- Retailer
- Teacher
- Travel-teacher
- Other

(OPTIONAL)

INDIVIDUAL MEMBERS ONLY

Individual Members, check all boxes that apply. Listings are \$10 each per year.

- Author
- Teacher
- Travel-teacher
- Design and/or painting skills for hire

The *2011 Business & Teacher Directory* will be available for sale in spring of 2011.

4 BUSINESS & TEACHER DIRECTORY 2011 PREORDER (OPTIONAL) Check the appropriate box to preorder your copy.

- Free for Business Members (all countries)
- \$12 • Directory price for U.S. Members
- \$20 • Directory price for International Members (U.S. funds)

To be included (based on the categories you checked above), you must renew your membership by Dec. 1, 2010. Copies will be mailed in spring 2011.

Make checks payable to: SDP, 393 N. McLean Blvd, Wichita, KS 67203-5968. • For faster service, use MasterCard or VISA and call (316) 269-9300 ext. 105, or fax application to (316) 269-9191 • Join online at WWW.DECORATIVEPAINTERS.ORG.

5 PAYMENT

Note: SDP serves its members by providing information and communications via email. These communications include, but are not limited to, e-zines such as Chapter Happenings newsletter, informational e-blasts, and notification of contests and promotions from SDP business members. If you would prefer not to receive newsletters and other communications, please do not provide your email address.

Total _____

VISA MasterCard Exp. date _____ Phone _____
 Card number _____ Signature _____
 Yes! This is a Gift Membership from _____ Memb. no. _____

**DUES POSTMARKED AFTER DEC. 1, 2010, REQUIRE AN ADDITIONAL \$5 LATE FEE.
 (DOES NOT APPLY TO NEW MEMBERS OR THOSE WHO DIDN'T RENEW IN THE PAST TWO YEARS.)**

Idaho Chapter of Heritage Artists

presents

Celebrate Decorative Painting Month

An open house/membership drive at **1942 E. Grayson Street, Hubble Homes Estancia Subdivision, Meridian, Idaho**, Saturday, October 16, 9 am to 4 pm.

Directions: from the freeway take either the Meridian or the Eagle exit. Head south (toward the Owyhee mountains) and turn onto Amity. The home is on Amity between Eagle Road and Locust Grove. From Amity turn onto Glenmere street in the Estancia subdivision. The model home is straight ahead. (Note: the subdivision is the only one out there and hard to miss. It is in the middle of farm ground.)

Please invite all your friends or anyone you think might be interested. If you bring a friend you both get a raffle ticket. All guests get a raffle ticket. Prizes are hand-painted items by the committee. Yummy food will be provided.

Please wear your name tag. There will be plenty of parking but carpool if you can and park down the block, if possible, so our guests can park closer.

Schedule:

9:00 sharp membership meeting
10 am to 4 pm Open house/Parade of Homes tours
Painting demonstrations: 10 am - 1 pm
1 pm - raffle for painted items
4 pm – Open house ends

Demonstrations

Karla Oliver – terra cotta pots using learning lesson from SDP website

Nony Housh – adding texture effects to decorative painting

Sandy Halasz – painting on cloisonné

Willa Grant – Basic painting and strokework techniques

Laneal Chirin – Russian folk art

Leah Luper - Stenciling

Each room in the home will be decorated with a specific theme. We are asking members to share their painted items that may fit in with one of the themes below. If you would like to share an item please let Vicky Kausen know what you will be bringing. Please mark all items with your name and deliver them to a committee member or take them to the model home Friday night (after 7 pm), October 15. Plan to pick them up Saturday afternoon or arrange for their pickup.

We will have "Please do not touch signs" throughout the home and there will be "Hostesses" in each room to monitor our items.

Kitchen: Need a variety of painted kitchen décor: Canister set, bowls, trays, bar stools, painting, salt/pepper set, teapots, chef boards/cheese boards, wine items, gourds for top of cupboards.

Dining Room: fall/Thanksgiving décor Table settings, painted placemats, centerpiece, large fall objects for corners, scarecrow, fall picture, cornucopia.

Living Room: Christmas theme Medium size Christmas tree, nativity set, Christmas tree ornaments, candles and candle holders/ mantle décor, large Christmas figurines for front of fireplace, other Christmas items for coffee table, magazine rack, fireplace screen, bench /table for behind the couch

Master Bedroom- Victorian/Russian/floral type theme Valet, trunk, lamps, magazine rack, bed tray, rocking chair

Master Bath- Continue the floral etc. theme so it will flow. This is very large bathroom, with large walk in closet. We have lots of room to display items on shelves in the closet as well as on the countertops.

Small Den: We are thinking of a "Man Cave" Fishing décor/ hunting, Old world look with an antique quality, cribbage/chess set, foot stool, magazine rack, pictures. Pat Cook could share her trunk depicting wild game animals!

Children's Bedroom: It has a pink décor now but we can incorporate both girl and boy type of things
Rocking horse, children's furniture, train set, toys

Laundry Room: fun laundry items Clothesline, basket, waste basket, pictures, table, stool

Front Porch: It has a large front porch that can handle outdoor décor Painted chairs, pots, signs, statues

If you have any questions contact any committee member: Vicky Kausen, Willa Grant, Tana Brown, Julie Cloud, Karla Oliver, Sandy Halasz, Jackie Chappell, Penni Howard, Bobbie Mathews, or Darlene Blakeslee.



RAFFLES

Ornaments



T'was the Night Before Christmas

**Idaho Chapter of Heritage Artists
Annual Christmas Party and Luncheon**

December 4th 2010

The Red Rock Christian Church

1124 S Roosevelt, Boise

11: 00 am Lunch is served

Cost is \$8.00

FOOD

FRIENDS

Santa



**IDAHO CHAPTER OF HERITAGE ARTISTS
SOCIETY OF DECORATIVE PAINTERS
BUSINESS MEETING MINUTES
SATURDAY, Sept., 18, 2010**

The regular business meeting of the Idaho Chapter of Heritage Artists was held on Saturday, September 18, 2010 at the University of Phoenix, Meridian, Idaho.

Present: Stephanie Abernathy, Kathy Archer, Tana Brown, Bev Canty, Jacky Chappell, Laneal Chirin, Ann Christoph, Sherrill Clark, Julie Cloud, Rebecca Compton, Linda Dunlap, Margaret Erskine, Betty Jo Evans, Margo Ferrera, Nancy Frank, Cindy Frendt, Vicki Gardiner, Katie Granger, Willa Dean Grant, Kathy Griswold, Sandy Halasz, Kris Hennis, Mary Ann Herod, Nony Housh, Penni Howard, Jan Isaacson, Sally Jepson, Donna Kirk, Darlene Little, Leah Luper, Pat Marler, Bobbie Matthews, Donnalee Moore, Verna Moore, Phyllis Moreland, Cheryl Myhre, Sandy Oldham, Karla Oliver, Mary Anne Pelkey, Gisele Pope, Jan Tell, Sally Weiskircher, and Diann Williams.

Guests Present: Jessica Pope

Call to Order: President Leah called the meeting to order at 9:20 a.m., a littler later than normal due, to the fact that the University of Phoenix was having an open house and our meeting had to be relocated to other rooms.

There were no corrections or deletions to the minutes of the May meeting. They stand approved as printed.

The date for the next board meeting will be announced in the next newsletter.

Officer Reports:

Treasurer's Report: Gisele gave the following report:

Balance from Previous month:	\$12629.22
Income :	+ 7426.00
Expenses:	- 1329.87
Memory Box Expenses:	<u>- 519.66</u>

Total ending balance General fund and Memory Box Fund: **\$18205.69**

The majority of the income is from Retreat fees which will go to pay for Retreat the first week of October.

Communications None reported.

Programs: Sandy asked we mark our calendars for the Shara Reiner seminar April 15-16-17, 2011. Shara is known as the Funky Folk Artist and many of her projects can be found in all the painting magazines. Members will be voting on the projects for the seminar at the November meeting. The seminar will consist of 3 one day projects and the cost is still to be determined depending on how many sign up.

Sandy is looking at the possibility of Maureen McNaughton coming to teach in 2012 or 2013, since she was the first choice when we voted on who we would like to come. The cost of this seminar would a little higher than we are used to, since Maureen's teaching fee is \$850 per day, plus hotel, transportation, food and surfaces. It is still a very good deal when the costs of taking a seminar at home are compared to having to travel to one with all the expenses of travel are added to the seminar fees. Sandy is looking into joining with another chapter in a neighboring state and see if we could both schedule her consecutively, and share some of the transportation costs.

Members may sign up today to take Vicki Gardiner's Christmas Candle Pillar class in November and Gisele Pope's Tips and Techniques class in January. Diann reported she met a lady who did painting on feathers at the fair last month and will talk to her about coming to the Feb. meeting to do a demo on this technique since many members expressed an interest in this.

Newsletter: Bev reminded us that the deadline for submitting items to the newsletter is Monday September 27th. It is a shorter time for the deadline due to retreat coming Oct. 2, 3, and 4.

Membership: Karla introduced a new member today, Mary Anne Pelkey. She also reminded everyone that it is time to pay both SDP and ICHA dues. SDP is \$40 before Dec. 1st and \$45 after that. Local dues are \$15. It was also announced that Laneal Chirin's picture was in the SDP on page 133, for an art exhibit she participated in, while attending a seminar with Russian artist, Slava Letkov, in Waterville Valley, NH.

Committee Reports:

Memory Box: Kathy reported that the inventory of painted boxes is down to 10, not counting the several that have been brought in today. St. Luke's Downtown and Mercy Medical in Nampa have recently received boxes, and they are expecting a call from St. Luke's in Meridian at any time. She reminded everyone that cheerful boxes of any design are needed and they don't have to be an involved design. The hospitals have requested no very dark colors unless they are spiced up with a lot of bright colors and no realistic faces. If you need any boxes, please call Kathy, Kris or Julie Cloud and they will make sure you get boxes, if you didn't pick some up at the meeting

Sunshine: Kris announced that all the birthdays for July, August and September received a ticket in today's raffle. She also asked for special prayers and love be sent for the following members that we know are going through some difficult times right now, Kathy Archer, Pat Cook, Lindsay Bruns, Judy Cooper and Darlene Blakeslee. A card is also being passed around for Ginny Stephens who moved to Oregon this week.

Historian: No Report this month

Ways and Means: Nancy Frank reported that the Summer chair will be raffled today and the Autumn chair, during the October meeting. It was announced that a new chairman is needed for Bunko next year to get a head start on planning. Jan Tell and Sandy Oldem will co-chair.

Art Share: Leah asked all present who worked at the ICHA table or entered the Western Idaho Fair last month to stand. She showed all the beautiful projects entered that had been brought today. There were very many ribbons won by our members. Then Leah presented the participants with a medal on a ribbon. It said MVP on the front and was engraved on the back with " ICHA Member 2010 Participant, Western Idaho Fair. Those receiving medals today were Tana Brown, Penni Howard, Jan Tell, Ann Christoph, Gisele Pope, Julie Cloud, Sandy Halasz, Kris Hennis, Kathy Griswold, Jacky Chappell, Donna Kirk, Sherrill Clark, Darlene Little, and Pat Marler. Diann Williams thanked all members who participated.

Hospitality: Leah thanked all those who brought refreshments today. Mickey Knudsen has volunteered to help Jan Tell finish out the year as refreshment chairmen, to fill the vacancy with Ginny Stephens moving.

Retreat: Nony announced that everything is almost ready to go for retreat. She suggests you get plenty of rest the week before, because it will be a jammed packed, exciting weekend in Cascade. Remember to paint and bring your magnifying glass that was in your packet, and the suitcase you have chosen to paint on. Today is the last day to pick your class that was listed on the postcard in your packet. If you haven't picked one, it will be assigned for you, but don't worry, they are equally wonderful!

October Membership Meeting: The October meeting will be held Oct. 16th, in a model home with demonstrations in different methods of using art to decorate your home and several painting techniques. The location will be announced in the newsletter and with flyers, since the location has to be changed at the last minute due to the previous home being sold. It will probably be in the Meridian or Nampa area. Vicki Kausen and Julie Cloud are co-chairmen. There will be a short business meeting first. Everyone is encouraged to bring guests, since the object is to make the public aware of our art and recruit new members. Members bringing a guest will receive a free raffle ticket for the hand painted prizes, as well as the guests receiving tickets.

Christmas Party: Penni reminded everyone that the Christmas Party will be held Dec. 4th, 11a.m., at the Red Rock Christian Church in Boise. There will be an ornament exchange and the bags for this will be provided. Donations for painted centerpieces to be raffled off, have been requested. The cost of the catered lunch is only \$8.00 and the menu will be Chicken stuffed rolls with cheese sauce, Garlic and Dill Red Potatoes, Green Salad, Hot Rolls, with Cheese Cake /raspberry or strawberry topping.

Old Business:

Leah reminded us that the Light the Night Walk has requested we do face painting again this year. It will be held at Ann Morrison Park Oct. 7th. More volunteers are needed. We did not have enough last year. Bring regular paints, brushes, water container, and mirror and glitter if you have it.

Diann announced that nominations were open for next year's board and that while they had a few names for positions, they would like to have at least two for each job. After discussing the various positions, these are the people so far that have stepped up to run. President- Diann Williams and Pat Marler, 1st VP Programs, Leah Luper and Penni Howard, Newsletter, Bev Canty, Membership, Kris Hennis and Nancy Frank, Treasurer, Betty Jo Evans and Darlene Little will run as co-treasurers. Secretary, Julie Cloud and Sally Weiskircher. Nominations are still open and if you are interested in running for any of these positions, call Diann Williams.

New Business:

Leah has been asked to be the Chair of the President's Reception in Wichita at the SDP convention next year. Flowers will probably be the theme and each attendee will receive a small painted piece. There are usually less than 100 people. Leah will be responsible for the food, painted pieces and location. She asked if the Chapter would be in favor of a donation of \$100 to help with this. She also asked for assistance in painting the gifts. Gisele make a motion that we donate \$100 for the SDP Presidents Reception, and Laneal seconded the motion. Motion passed.

Kris Hennis conducted the regular monthly raffle and Sally won the beautiful butterfly coaster set painted and donated by Leah and will be bringing the painted item for the next raffle, which will be in November since we won't be doing the regular raffle at the October meeting.

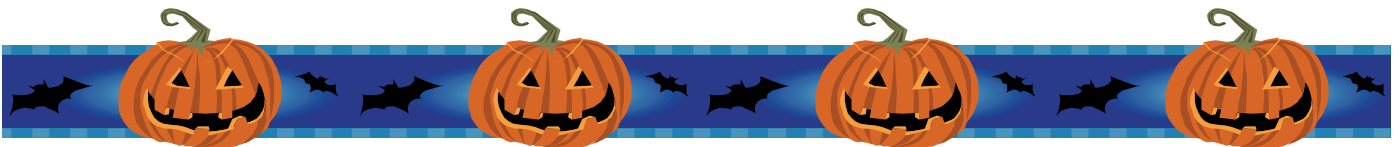
Leah thanked Sandy Halasz for teaching the lighted glass block design at the meeting.

The Summer chair was won by Sherrill Clark.

Meeting adjourned at 10:35 a.m.

Sally Weiskircher, Secretary

Leah Luper, President



Newsletter Deadline

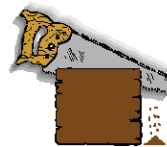
Monday, OCT. 25. Please send your information to: ichanews@gmail.com

Trading Post

Does anyone have any art related supplies they would like to buy, sell or trade, or even give away? Looking for a particular pattern, book or magazine? The trading post has been very quiet for some time now. Submit your ad request by the newsletter deadline each month and you can have a free ad as space allows, first come first served. Remember all transactions take place between the interested parties with no chapter involvement.



Palette & Sawdust



Would you like to attend a **Ghoul's Night Out Halloween Party Oct 23?**

Space is still available, Call now and pay at October Chapter Meeting.

Open classes beginning November.

Call for details.

If you need wood, give me a call or Visit www.paletteandsawdust.com

Bev and Chuck Cauty

208-459-2380

401 Smokey Ln.

Caldwell, Id 83607

ROD'S HOME IMPROVEMENT

Home Remodel Experts

Rod 208-936-5778

Wayne 208-919-1799

www.rodshomeimprovement.com

Specializing in
Kitchens and
Bathrooms

Repairs & Upgrades
Tile & Laminate
Painting & Texture
Mouldings & Trim
Doors & Windows
Handyman Services

Licensed & Insured
License # RCT-20855

Fax 208-459-2229

cookies
by design

THE ORIGINAL COOKIE BOUQUET COMPANY

GLENWOOD CENTER
5159 N. GLENWOOD
BOISE, ID 83714
tel: 208.375.7999
fax: 208.378.9878

cookiesbydesign.com
idahocookies.com

(A148-PW)



REBECCA COMPTON, CRS, GRI
Associate Broker, REALTOR®

(208) 850-3840 CELLULAR

(208) 939-3465 HOME OFFICE

(208) 939-0276 HOME FAX

rcompton@coldwellbankertg.com



TOMLINSON GROUP

6933 W. Emerald Street
Boise, ID 83704

Professional Client Center
© Clearcube.com

ERA West Wind Real Estate
950 N. Cole Road, Boise, ID 83704

Million Dollar Club

Office: (208) 377-2121 ext. 237
Cell: (208) 867-2729
Fax: (208) 377-2309
E-mail: darlene.blakeslee@era.com
www.darstours.com

Darlene Blakeslee
REAL ESTATE CONSULTANT



It's Your Day

Wedding and Event Planning

Customized services & pricing to meet your needs

Officiant on staff

Krissy Blandford
Officiant/Planner

921-1809



Diann Williams
diannw@cablone.net

921-1880

Gisele Pope

Creativity....unleashed!
www.giselepope.com

Designer
Business Consultant
Product Development

9931 West Skycliffe Avenue
Boise Idaho 83704

208-378-0569
208-761-3036

2010 Officers

President:	Leah Luper	455-4266	luperlea@pacbell.net
1st Vice Presidents (Programs)	Sandy Halasz	398-8701	appleblzum@aol.com
2nd Vice President (Newsletter)	Bev Canty	459-2380	ichanews@gmail.com
3rd Vice President (Membership)	Karla Oliver	922-5781	markarla3@msn.com
Secretary:	Sally Weiskircher	888-3371	sallyw625@gmail.com
Treasurer:	Gisele Pope	378-0569	gisele_pope@hotmail.com

Historian:

Vicki Gardiner 453-1511
vjgardiner@msn.com

Sunshine:

Kris Hennis 853-0203
krissydee@gmail.com

Darlene Blakeslee 867-8729
darlene.blakeslee@era.com

Hospitality:

Jan Tell 908-7630 jantell@gmail.com

Memory Boxes:

Kris Winston 463-9767 curtcris@aol.com
Kathy Griswold 989-9061 kathgris@sarmc.org

Calling Tree:

Willa Grant 344-1406

Website:

Sally Weiskircher 888-3371 sallyw625@gmail.com
Leah Luper 455-4266 luperlea@pacbell.net

Art Share:

Marsha Sellers 587-1644 grammiesredhat@q.com

Budget Committee:

Gisele Pope 378-0569 gisele_pope@hotmail.com
Leah Luper 455-4266 luperlea@pacbell.net

Fair Committee:

Diann Williams 855-0820 diannw@cableone.net

Ways & Means Committee:

Stephanie Abernathy 888-5133 szdday@msn.com
Nancy Frank 401-4233 nancylfrank@juno.com

October Meeting

Julie Cloud 577-5440 julie.cloud@ymail.com
Vicky Kausen 461-7750 victoriaelizabeth4u2@yahoo.com

Christmas Party:

Tana Brown 968-0557 tbrown015125@yahoo.com
Penni Howard 703-0424 bnphow@cableone.net

Retreat 2010:

Nony Housh 461-4596 nonyhoush@msn.com
Betty Jo Evans 342-1924 bjo@q.com

Nominating Committee:

Diann Williams 855-0820 diannw@cableone.net

Audit Committee: Vacant



~Charitable Donations ~

Please remember to bring your items to be donated to the Valley Crisis Center in Nampa. Items requested are, women's panties, socks, feminine hygiene products, diapers and formula. Other small personal items such as soap, shampoo, deodorant, etc., are welcome also. There will be a collection box at each meeting throughout the year. A big thank you to Judy Cooper who has delivered our donations to the shelter and reports that the women there are very grateful for our generous contributions. Please let us all keep up the good work!

Idaho Chapter of Heritage Artists
 Bev Canty, Editor
 401 Smokey Lane
 Caldwell, ID 83607

Check it Out!
 We're on the web!

www.idahoheritageartists.org

Would you like to advertise in this newsletter?

Advertising Rates

<u>Ad Size</u>	<u>Monthly</u>
Business Card	\$3.00
1/4 page	5.00
1/2 page	10.00
Full Page	20.00

Pay for the full year and get 1 month free!

*Members receive Business card size free and 10% off on all other sizes.



Special membership meeting
 this month .

See page 7 for details and
 location.

Meetings will return to the Univer-
 sity of Phoenix in November.