



# Idaho Chapter of Heritage Artists CHAPTER CHATTER

What a great crowd we had at the first meeting of 2011 – the beginning of year 30 for our ICHA. It was refreshing to see so many faces both familiar to me and some not so much. I hope to get to know the unfamiliar ones more and stay connected to the ones I have known for a long time. This is a tremendous group of very talented and creative artists. At the end of this year, I hope each of us can say we are better for having participated in chapter events this year.

Success is a result of our thoughts. Our thoughts are the foundation of our actions. Your thoughts of creativity and execution will be enhanced by the classes such as the one Gisele presented. The intention of the Board, with the implementation of the technique and theory classes, is to enhance your chance of success as artists. I hope you will take advantage of these opportunities.

Along those lines, we need more teachers to step up like Sandy Oldham and Cindy Frenndt did to teach classes. Thank you ladies!!!! It was very disappointing to think that only two artists (out of 85) are willing to share their talents. I am looking forward to seeing more class selections at the February meeting. Please do your part!!!!

WOW – what a great class with Gisele - she can cram more into a class session than I ever believed was possible. Our heads were swimming with information, information and more. The best thing about it was the outline and our taking notes. This will be a great first chapter for our new sketchbooks that come in March.

We still need committee chairs and members for the activities that we all enjoy. I know the Bunco committee is off to a great start thanks to Jan and Sandy's leadership. The retreat committee chair is available (committee members are already signed up). This is an opportunity to lead a wonderful party with new or old ideas and have a great time. I will have the sign ups at the February meeting.

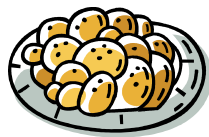
Come and participate in "Memory Box Painting" at the February meeting. As always this is a great community involvement project, plus we get to be creative and give a family in need comfort and some pleasure with our painted boxes. Thank you Kris and Kathy for your continued leadership roles in this project.

Pat

## February Hospitality



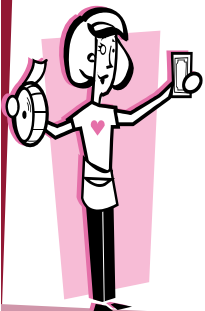
Darlene (?Little or Blakeslee?)  
Jan Tell  
Laneal Chrin  
Julie Cloud



## February Birthdays



Anita Mutchie	Feb 8
Sandy Halasz	Feb 12
Lindsay Bruns	Feb 15
Melva Johnson	Feb 17
Meryl Jewell	Feb 22
Joann West	Feb 24
Virginia Zimmerman	Feb 25



Jan Tell won the raffle and chose the special piece. She will be bringing a painted item for the February raffle. Tickets are \$1 each or 6 for \$5. The more donated items we have the more we make for the chapter.

## Sunshine



If you, or anyone you know, is in need of a little sunshine or good wishes, please let Darlene know. It only takes a minute to make a bright spot in a friend's day.

Darlene: [darlene.blakeslee@era.com](mailto:darlene.blakeslee@era.com) 867-2729  
Willa Grant 344-1406

## Program Happenings

Leah Luper 455-4266 luperlea@pacbell.net

I have heard rave reviews about the January program with Gisele. Thank you Gisele for sharing so many wonderful tips and techniques.

Be ready to paint memory boxes at the February meeting, there will be several designs and teachers available for assistance. Bring your normal painting supplies and a good feeling in your heart, knowing that what you are doing will help parents when they need it most. Please stay to help paint, or take several boxes home to paint and return in March.

At March's program Betty Jo will share a design that can be used on the front of your journal binder. I plan to have the binders available and hand them out prior to the start of the General Membership meeting in March.

Chapter Programs: We are in need of 3 more painting projects for this year and 2 "building skills" programs. Please bring projects to the February meeting and the members will vote for 3. I know several teachers were holding back on submitting projects this year to allow more members the opportunity to teach. Please don't hold back anymore and bring a project or two in February. The building skills programs are for June and October. The skills programs should last about a couple of hours and could be an item that can be added to the journals.

Seminars: Shara Reiner will be here April 15, 16, and 17th. The cost is \$30 a day and you provide your surface. We will have the seminar at Bev Canty's studio in Caldwell. Please join us for a fun three days. Contact Leah Luper, Penny Howard or Tana Brown to sign up.

## Mark Your Calendars

**April 15, 16 & 17, 2011** Shara Reiner is scheduled to come and paint with us. These are the projects we will be painting. Measurements are the main painting surface size.



16" X 30"



28" X 11"



17" X 8"

# BUNKO COMMITTEE

## SAVE THE DATE

**SATURDAY, APRIL 30<sup>TH</sup>, 2011**

### BUNKO FUND RAISER

Tickets go on sale at our February Chapter Meeting for our annual Bunko fund raiser and are still only \$15.00 per person. The price of a ticket includes an entry in the door prize, a raffle ticket, lunch and, of course, an afternoon playing Bunko. We have 100 seats to sell this year ladies, so invite your family, friends and neighbors to this once a year event. Bev Canty will be selling tickets beginning at our February Chapter meeting. Also on sale that same day will be Raffle tickets for the event. Please see Janet Isaacson or Nancy Frank to purchase your tickets. The theme this year is western. Lastly, we need 25 card tables for this event. If you have card tables you can lend us for April 30<sup>th</sup>, please see Jan Tell at the February meeting to sign up.

## DOOR PRIZE PAINTERS

We are still looking for a couple of people to paint something spectacular to give as a door prize for this event. If you are willing to paint something for us, please contact either Jan Tell or Sandy Oldham.

### SATURDAY, FEBRUARY 12<sup>TH</sup> RAFFLE PRIZE PAINTING EVENT

As you know, we will be painting at Bev Canty's Studio in Caldwell on Saturday, February 12<sup>th</sup> from 9:30 a.m. to 4:30 p.m. Bev has graciously offered to provide the surfaces, patterns and paints for this fun day. Please bring your painting supplies and a happy disposition and paint the day away or come and pick something out and stay as little or as long as you can. You can take the project with you to finish up. As lunch will be provided, please contact Bev if you plan to attend so we can have enough food. See you there. If you can't join us and would like to contribute raffle prizes here are some ideas of things to donate:

PAINTED PIECES(s) These can be wood, metal, canvas (framed or unframed), candles, rocks, furniture pieces, etc.

Any other hand crafted items

Gift Certificates – Dinners, Stores, Spas, Movie Tickets, Crafter's Warehouse, Quality Art, or Michaels. Etc.

Gift Baskets – Any theme you choose

Single items I can include with other gift baskets (We would like to include a painted item in each basket.).

Packages of coffee or teas, mugs

Scrapbooking Supplies, Handmade Cards

Books – good reading (no painting books) - Note Paper

Candles

Lotions or nice soaps

Plants or Garden items

If it is an item you would enjoy receiving, someone else probably would too.

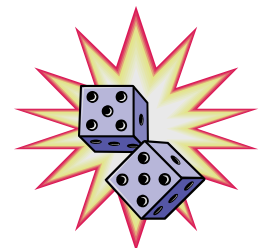
Since our audience will hopefully include several non painters, we are asking that you NOT include painting books, brushes, paints or raw wood.

Contact Vicki Gardiner (453-1511 [vjgardiner@msn.com](mailto:vjgardiner@msn.com)) or Leah Luper (455-4266 [luperlea@pacbell.net](mailto:luperlea@pacbell.net)) to donate.

## BUNKO COMMITTEE MEETING

**FEBRUARY 1<sup>ST</sup>**

**JAN TELL'S HOUSE AT 6:30 P.M.**



# Memory Box Program

The February meeting will be our annual paint-in. We have 4 designs to choose from , or if you have an old one that needs to be finished, bring that one and finish it up while painting with all of your friends. This is a wonderful service and we are in need of boxes. Remember that we all need to paint 2 boxes a year to keep this community project going. If you still need a box, let us know and we will get one to you. Check your stash for those that are almost finished and let's get those out of your closets!!!!

Many thanks to all of your for your service. Kathy - [kathgris@sarmc.org](mailto:kathgris@sarmc.org), 989-9061 or Kris 869-1613.

Tana will be teaching this memory box.

It can be painted on any color

background. You will need to bring

white paint. Tana will supply the rest

with the colors for a coral colored rose. If you want a different color rose, you will have to supply your own paint for it (plus highlight and shading colors).



# Fair News

The Western Idaho Fair dates are August 19—28 and the theme is 'How the West was Fun'. The Canyon County fair will be held July 27-31 (theme yet unknown) Please start planning what you will be entering now and avoid the rush!

## Membership!!

We have 3 new members that signed up in January.  
Please Welcome:

### Jacque Kinney

11680 East Highway 20  
Mountain Home, ID 83647  
587-7340 Birthday 09-5  
Cell 860-7209  
brycetracy@hotmail.com

### Patti Hamaishi

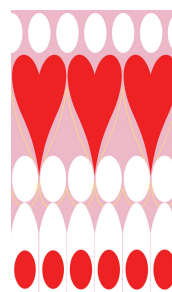
P. O. Box 272  
Mountain Home, ID 83647  
587-2777 work Birthday 06-6  
pattihamaishi@hotmail.com

### Meryl Jewell

10628 State Highway 78  
Givens Hot Springs, ID 83641  
Home 896-4225 Birthday 02-22

### ~Charitable Donations ~

Please remember to bring your items to be donated to the Valley Crisis Center in Nampa. Items re-quested are, women's panties, socks, feminine hygiene products, diapers and formula. Other small personal items such as soap, shampoo, deodorant, etc., are welcome also. There will be a collection box at each meeting throughout the year. A big thank you to Judy Cooper who has delivered our donations to the shelter and reports that the women there are very grateful for our generous contributions. Please let us all keep up the good work!



***A SPECIAL THANK YOU TO ALL OF YOU THAT TOOK MY TIPS AND TECHNIQUES CLASS AFTER THE MEETING IN JANUARY. IT WAS SO MUCH FUN TO SHARE NEW IDEAS, REFRESH OLD-FORGOTTEN IDEAS AND LEARN NEW THINGS AS A GROUP. THANKS FOR TAKING PART IN THIS CLASS WITH ME!***

***GISELE POPE***



### Newsletter Deadline

Wednesday February 23 Please send your information to:  
[ichanews@gmail.com](mailto:ichanews@gmail.com)

## Trading Post

Does anyone have any art related supplies they would like to buy, sell or trade, or even give away? Looking for a particular pattern, book or magazine? The trading post has been very quiet for some time now. Submit your ad request by the newsletter deadline each month and you can have a free ad as space allows, first come first served. Remember all transactions take place between the interested parties with no chapter involvement.

This is your opportunity to paint with a first class Rosemaler from Norway, Bjorg Kleini, April 11,12,13,14,15. Contact Joanne Hullstrand if interested. 375-5992

**Gisele Pope**  
Creativity...unleashed!  
www.giselepoppe.com

**Designer**  
Business Consultant  
Product Development

9931 West Skycliffe Avenue 208-378-0569  
Boise Idaho 83704 208-761-3036



*It's Your Day*  
Wedding and Event Planning  
Customized services & pricing to meet your needs  
Officiant on staff

Krissy Blandford  
Officiant/Planner  
921-1809



Diann Williams  
diannw@cablone.net  
921-1880



## Zhostovo Class & Paint-In

Sat. Feb. 26<sup>th</sup>

10 a.m. – 3:00 p.m. at Bev's Studio  
401 Smokey Lane, Caldwell, Idaho

Class: \$15 includes pattern, surface, paint

Beginner's welcome! Come & paint a sample Zhostovo Project.

Wonderful opportunity to try this beautiful Russian Folk Art style.

Paint-In: \$10 – Bring your own Project

Bring a Zhostovo project to prep, work on, or finish

Get your brushes in practice for the seminar with Misha

More information & supply list sent upon receipt of registration

Register by Feb. 15<sup>th</sup> – send check to:

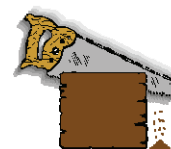
Laneal Chirin, P. O. Box 3183, Nampa, ID 83653-3183

e-mail or call Laneal for more info

[lchirin@msn.com](mailto:lchirin@msn.com) 989-1304



## Palette & Sawdust



Need to order the wood for Shara's Seminar? See me at chapter or give me a call. We have the both trays.

February's ornament class is full, Watch for the March ornament class email, or see me at chapter for details.

If you need wood, give me a call or  
Visit [www.paletteandsawdust.com](http://www.paletteandsawdust.com)

Bev and Chuck Canty

208-459-2380

401 Smokey Ln.

Caldwell, Id 83607

**Idaho Chapter of Heritage Artists  
Society of Decorative Painters  
Business Meeting Minutes  
Saturday, January, 15, 2011**

The regular business meeting of the Idaho Chapter of Heritage Artists was held on Saturday, January 15, 2011 at University of Phoenix building in Meridian, Idaho.

Present: Darlene Blakeslee, Tana Brown, Lindsay Bruns, Winston Bruns, Bev Canty, Laneal Chirin, Ann Christoph, Sherrill Clark, Julie Cloud, Pat Cook, Judy Cooper, Margaret Erskine, Betty Jo Evans, Margo Ferrera, Nancy Frank, Cindy Frendt, Dianne Fridrich, Vicki Gardiner, Sandy Halasz, Mary Ann Herod, Penni Howard, Joanne Hultstrand, Jan Isaacson, Melva Johnson, Donna Kirk, Glenda Krajnik, Mickie Knudsen, Darlene Little, Pat Marler, Bobbie Matthews, Sherree Merritt, Donalee Moore, Phyllis Moreland, Irene Myers, Cheryl Myhre, Laura O'Dell, Sandy Oldham, Karla Oliver, Gisele Pope, Donna Rich, Beth Seamans, Terry Sieminiski, Jan Tell, Carolyn Wardle, Sally Weiskircher, Diann Williams, Beth Wilson, Kris Winston, Patti Hamaishi, Jacque Kinney, Jeni Bradley, and guest, Meryl Jewell

**Call to Order:** President Pat Marler called the meeting to order at 9 a.m. Pat introduced herself, asked that members be on time as she will start the meeting promptly at 9 am. New members Patti Hamaishi, Jacque Kinney, returning member Jeni Bradley and guest Meryl Jewell were introduced. Pat also tried to introduce the new ICHA board but most officers were not present.

**ICHA Birthday:** This month, ICHA is 29 years old. Pat gave a bit of the history on how the chapter came into being. We celebrated with a decorated cake from Pastry Perfections.

Pat thanked Bev Canty for the marvelous newsletter, Gisele Pope for teaching today, the officers for providing treats, Penni and Tana for the great Christmas party, and the 2010 officers for a good year.

There were no additions or deletions to the November, 2010 minutes. They were approved as printed in the newsletter.

Pat read a letter of thanks and appreciation from the Valley Crisis Center in Nampa.

**Officer Reports**

Betty Jo handed out a budget worksheet with the proposed 2011 budget.

The next board meeting will be announced in the newsletter.

**Programs:** Penni reported that only two people submitted to teach projects in 2011. After discussion it was moved by Penni Howard and seconded by Carolyn Wardle to move the project submissions to February meeting. The motion carried. It was also moved by Laneal Chirin and seconded by Pat Cook, to accept the projects that were submitted at this meeting. Those projects were: Cindy Frendt- Pumpkin harvest banner and Sandy Oldham - Christmas Tray and ornament.

Penni said that signups start today for the Shara Reiner seminar, April 15 – 17. You can purchase wood pieces for this seminar from Bev by March 1. Cost for seminar is \$30 per day, with final payment by March 19. No location has been set for the Reiner seminar. Penni explained how the process for seminars, signing up, paying, etc.

**Newsletter** Bev reminded us that the deadline for submitting items to the newsletter is January 25.

## COMMITTEE REPORTS

**Sunshine and Raffle:** Darlene explained the raffle. Irene Myers brought the cute painted apron that is being raffled.

**Audit Committee:** Diann and Barbara (Williams) completed the annual audit of the Chapter's financial records. Diann presented the audit report. Beginning balance was \$11,529.26, income was \$17,353.00, expenses were \$15,754.95 with the ending balance at \$13,127.31. She has supplied a full report to the Chapter officers.

**Ways & Means:** Jan reported that the Ways and Means committee had their first meeting and the western-themed Bunco party will be April 30 at the Red Rock Christian Church in Boise. Jan asked for a volunteer to paint a door prize. Vicki and Leah are handling the raffle and they are accepting raffle prizes. After much discussion about what charity should be supported with the Bunco fundraiser; Jan moved and Gisele seconded that the organization called ArtFaire be given a percentage of the Bunco proceeds. This is a local organization that brings art to the disadvantaged and accepts volunteers and donations of art supplies.

Jan then talked about an additional fund raising activity similar to the painted seasonal chairs. These will be antique coffee/tea pots painted seasonally. Betty Jo will bring an example next month. The committee is asking for volunteers to paint the coffee/tea pots.

**Memory Box:** Kathy explained the memory box program and reminded us that there is a memory box paint-in following next month's meeting.

**Art Share:** Ann Christoph volunteered to run art share this year. She explained how Art Share works and then showed the beautiful items on display today.

Diann reminded us that we would have a 20-minute demonstration on feather painting at the February meeting.

## **New Business**

Pat asked for members to sign up to chair and participate on the various committees.

Betty Jo went over the budget worksheet. Judy Cooper moved and Sherrill Clark seconded that we accept the 2011 budget as discussed and amended in the meeting.

Betty Jo also discussed the idea behind the four scheduled 'skills/techniques' classes this year.

Betty Jo handed out 40% off cards for Quality Art.

Jan Tell chose the beautifully painted apron and will supply a painted item for next month.

The meeting adjourned at approximately 10:45 am.

Julie Cloud, Acting Secretary

Pat Marler, President

## LOCAL TEACHERS

### Sandy Oldham

Meridian, 288-1250

Beginner + classes

Wed.: am 9:30 - 12:30; pm 1:00 - 4:00

Call for prices.

### Palette & Sawdust

Bev Canty

Nampa/Caldwell 208-459-2380

Beginner + classes

Tuesday evenings and Thursday mornings

Call for times, schedule and fees

[www.paletteandsawdust.com](http://www.paletteandsawdust.com)

### Elsie's Really Cool Stuff

Laneal Chirin,

Zhostovo Associate Artist (Russian Folk Art)

Nampa 208-466-8765 or 208-989-1304 cell

e-mail: [Ichirin@msn.com](mailto:Ichirin@msn.com)

Beginner/Intermediate Zhostovo & painting classes

Call or e-mail for class info.

### Timber and Tole

Gisele Pope 208-378-0569

West Boise Home studio,

Beginner +

Wed. am 9-11:30 or Wed. pm 5:30-8

[www.giselepoppe.com](http://www.giselepoppe.com)

### Tana's Tole Treasures

Southwest Boise, 208-703-5610

Beginner/Intermediate

Call for times/cost

### The Tole Shed

Veletta Murphey

2417 W. Kuna Road

Kuna 208-922-5929

Monday evenings

Call for times/price/info.

Leah Luper

Caldwell, 455-4266

Beginner/intermediate

Call for times, schedule and fees





**REBECCA COMPTON, CRS, GRI**  
 Associate Broker, REALTOR®  
 (208) 850-3840 CELLULAR  
 (208) 939-3465 HOME OFFICE  
 (208) 939-0276 HOME FAX  
[rcompton@coldwellbankertg.com](mailto:rcompton@coldwellbankertg.com)



**TOMLINSON GROUP**  
 6933 W. Emerald Street  
 Boise, ID 83704

**Preferred Client Center**  
© Clearstar.com

**ERA West Wind Real Estate**  
 950 N. Cole Road, Boise, ID 83704

Million Dollar Club

Office: (208) 377-2121 ext. 237

Cell: (208) 867-2729

Fax: (208) 377-2309

E-mail: [darlene.blakeslee@era.com](mailto:darlene.blakeslee@era.com)

[www.darstours.com](http://www.darstours.com)



Always  
 There  
 For You



**Darlene Blakeslee**  
 REAL ESTATE CONSULTANT



THE ORIGINAL COOKIE BOUQUET COMPANY

**GLENWOOD CENTER**  
 5159 N. GLENWODD  
 BOISE, ID 83714  
 tel: 208.375.7999  
 fax: 208.378.9878

[cookiesbydesign.com](http://cookiesbydesign.com)  
[idahocookies.com](http://idahocookies.com)



(A148-PW)



Home Remodel Experts

Rod 208-936-5778

Wayne 208-919-1799

[www.rodshomeimprovement.com](http://www.rodshomeimprovement.com)

Specializing in  
 Kitchens and  
 Bathrooms

Repairs & Upgrades  
 Tile & Laminate  
 Painting & Texture  
 Mouldings & Trim  
 Doors & Windows  
 Handyman Services

Licensed & Insured  
 License # RCT-20855

Fax 208-459-2229

**Dates to Remember**

February 12	Bunko Paint-in	Bev Canty's Studio
February 19	ICHA Regular meeting	
February 27-March 5	*Creative Painting	Las Vegas
March 11-14	*Misha Russian Painting	Contact Laneal Chirin
March 19	ICHA Regular meeting	
April 9	ICHA Regular meeting	
April 15-17	Shara Reiner Seminar	
April 30	Bunko	Red Rock Christian Church Wichita, Kansas
May 16-21, 2011	*SDP Convention,	
May 21	ICHA Regular Meeting	
June 18	ICHA Regular Meeting	
July 11-13 and 15-17	*JoSonja Seminar	Boise Hilton
July 27-31	*Canyon County Fair	
August 19-28	*Western Idaho Fair.	
September 17	ICHA Regular Meeting	
September 22-25	*Raindrop's Convention,	Clackamas, Oregon
October 15	ICHA Regular Meeting	
November 19	ICHA Regular Meeting	
December 3	ICHA Christmas Party	
*non chapter event		



## 2011 Officers

<b>President:</b>	Pat Marler	322-0085	pmarler@clearwire.net
<b>1st Vice Presidents (Programs)</b>	Leah Luper	455-4266	luperlea@pacbell.net
<b>2nd Vice President (Newsletter)</b>	Bev Canty	459-2380	ichanews@gmail.com
<b>3rd Vice President (Membership)</b>	Kris Hennis	853-0203	krissydee@gmail.com
<b>Secretary:</b>	Vicki Kausen	461-7750	victoriaelizabeth4u2@yahoo.com
<b>Co-Treasurers:</b>	Betty Jo Evans	342-1924	bjo@q.com
	Darlene Little	888-3627	dlitt@q.com

### Historian:

**Vicki Gardiner** 453-1511 vjgardiner@msn.com

### Sunshine:

**Darlene Blakeslee** 867-8729  
darlene.blakeslee@era.com

**Willa Grant** 344-1406

### Hospitality:

### Memory Boxes:

**Kris Winston** 463-9767 curtkris@aol.com  
**Kathy Griswold** 989-9061 kathgris@sarmc.org

### Calling Tree:

**Willa Grant** 344-1406

### Website:

**Leah Luper** 455-4266 luperlea@pacbell.net

### Art Share:

**Ann Christoph** 388-2668 anngofar@hotmail.com

### Budget Committee:

### Fair Committee:

**Diann Williams** 855-0820 diannw@cableone.net  
**Donna Kirk** 342-5352 kirkd2@cableone.net

### Ways & Means Committee:

**Jan Tell** 908-7630 jantell@gmail.com

### October Meeting

### Christmas Party:

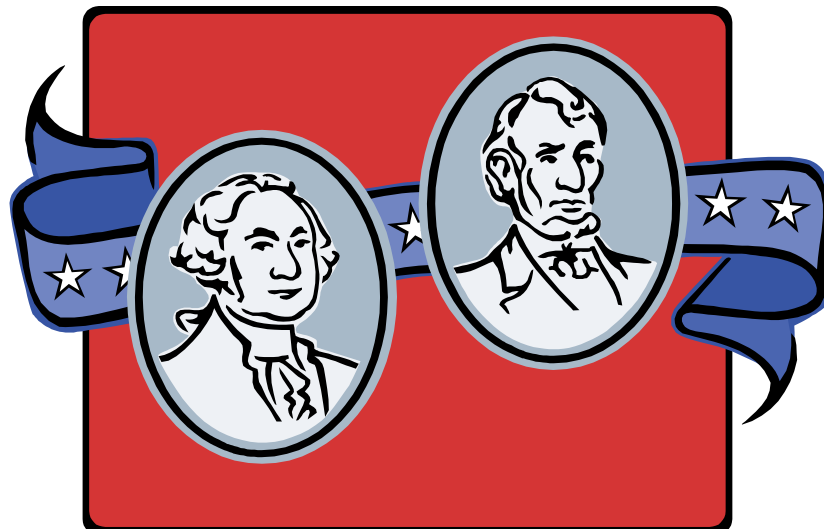
### Retreat 2011:

### Nominating Committee:

### Audit Committee:

### 30th Birthday Party

**Julie Cloud** 362-0828 Julie.cloud@ymail.com



Idaho Chapter of Heritage Artists  
 Bev Canty, Editor  
 401 Smokey Lane  
 Caldwell, ID 83607



Check it Out!  
 We're on the web!

[www.idahoheritageartists.org](http://www.idahoheritageartists.org)

Would you like to advertise in this newsletter?

#### Advertising Rates

Ad Size	Monthly
Business Card	\$3.00
1/4 page	5.00
1/2 page	10.00
Full Page	20.00

Pay for the full year and get 1 month free!

\*Members receive Business card size free and 10% off on all other sizes.

## February 2011

### Meeting Time and Place

- **Date:** All meetings are on the third Saturday of the month (Except June, July and August no meeting)
- **Time:** 8:00 to 9:00 for Registration, sign-ups, Coffee and Social time.
- **Meeting starts promptly at 9:00am**
- **Place:** *University of Phoenix*  
 1422 S. Tech Lane  
 Meridian, Idaho

Take the Meridian/Kuna exit - turn towards Kuna, take a right on Overland, then right on Tech Ln.